

See discussions, stats, and author profiles for this publication at: <https://www.researchgate.net/publication/327568390>

# Influence of feeding-damaged plants on the oviposition responses within a community of female moths

Article in *Phytoparasitica* · September 2018

DOI: 10.1007/s12600-018-0695-1

CITATIONS

2

READS

141

5 authors, including:



**Eric Ntiri**

icipe – International Centre of Insect Physiology and Ecology

6 PUBLICATIONS 16 CITATIONS

[SEE PROFILE](#)



**P-A Calatayud**

Institute of Research for Development

238 PUBLICATIONS 1,642 CITATIONS

[SEE PROFILE](#)



**Boaz Musyoka**

icipe – International Centre of Insect Physiology and Ecology

15 PUBLICATIONS 249 CITATIONS

[SEE PROFILE](#)



**Johnnie Van den Berg**

North West University South Africa

238 PUBLICATIONS 1,923 CITATIONS

[SEE PROFILE](#)

Some of the authors of this publication are also working on these related projects:



Evolution, systematics and diversification dynamics of seed-beetles [View project](#)



Genetic studies of *Busseola fusca* [View project](#)

*Influence of feeding-damaged plants on the oviposition responses within a community of female moths*

**Eric Siaw Ntiri, Paul-Andre Calatayud, Boaz Musyoka, Johnnie Van den Berg & Bruno Pierre Le Ru**

**Phytoparasitica**

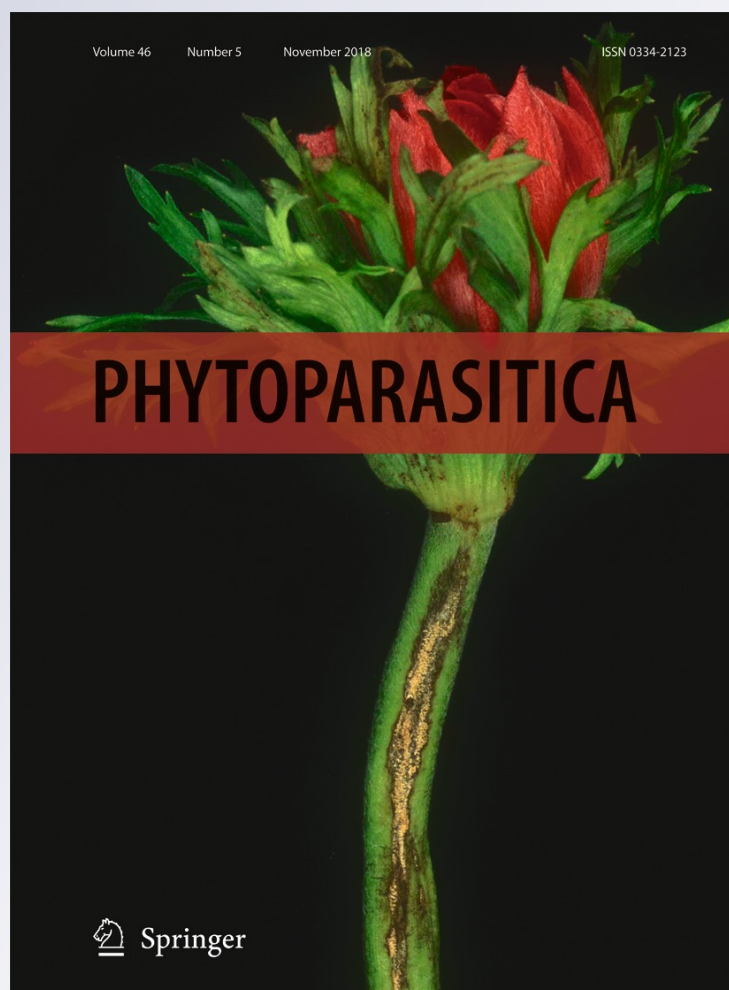
ISSN 0334-2123

Volume 46

Number 5

Phytoparasitica (2018) 46:607-615

DOI 10.1007/s12600-018-0695-1



 Springer

**Your article is protected by copyright and all rights are held exclusively by Springer Nature B.V.. This e-offprint is for personal use only and shall not be self-archived in electronic repositories. If you wish to self-archive your article, please use the accepted manuscript version for posting on your own website. You may further deposit the accepted manuscript version in any repository, provided it is only made publicly available 12 months after official publication or later and provided acknowledgement is given to the original source of publication and a link is inserted to the published article on Springer's website. The link must be accompanied by the following text: "The final publication is available at [link.springer.com](http://link.springer.com)".**

# Influence of feeding-damaged plants on the oviposition responses within a community of female moths

Eric Siaw Ntiri · Paul-Andre Calatayud ·  
Boaz Musyoka · Johnnie Van den Berg ·  
Bruno Pierre Le Ru

Received: 2 April 2018 / Accepted: 6 September 2018 / Published online: 10 September 2018  
© Springer Nature B.V. 2018

**Abstract** Competitive or facilitative interactions characterise phytophagous insect communities that utilise the same resources. These interactions are often mediated by the host plant. Plant mediation influences the oviposition choices that a community of insects, sharing the same host plant make. In this context, the oviposition choices of females within a community of lepidopteran cereal stemborers namely *Busseola fusca*, *Sesamia calamistis* and *Chilo partellus* were studied in plant choice-experiments under laboratory and field conditions. Gravid females of each species were presented with a choice between maize plants infested by conspecific or heterospecific larvae and uninfested maize plants. The number of eggs and egg batches laid on plants were used to quantify oviposition. Results showed that none of the three stemborer species avoided oviposition on infested maize plants. In some cases a significant preference for infested maize plants were

observed. Similarly, data from field trials under natural stemborer infestation, with *B. fusca* as the only species, showed that the wild ovipositing moths were not avoiding infested plants. Host plant mediation may influence the incidence of multi-species infestations by stemborer species often found in the field. The potential roles of herbivore-induced and egg-deposited-induced plant volatiles in this mechanism are discussed.

**Keywords** *Busseola fusca* · *Chilo partellus* · Herbivore-induction · Lepidoptera · *Sesamia calamistis* · Oviposition

## Introduction

The structure and function of ecological communities are maintained by direct and indirect interactions between species (Wootton and Emmerson 2005). In phytophagous insect communities, these interactions often occur through the utilisation of the same host plants, with the outcome being negative (e.g. competition), positive (e.g. facilitation) or neutral (Denno et al. 1995; Bruno et al. 2003; Speight et al. 2008). These interactions can be directly intraspecific or interspecific (Memmott et al. 2007) or indirectly through the mediation of the host plant they share (Faeth 1986; Fisher et al. 2000; Kaplan and Denno 2007). Plant-mediated interactions are common and are also the dominant factors which influence interactions between phytophagous insects (Faeth 1986; Ohgushi 2005; Denno and Kaplan 2007).

E. S. Ntiri · P.-A. Calatayud · B. Musyoka · B. P. Le Ru  
International Centre of Insect Physiology and Ecology (icipe),  
P.O. Box 30772-00100, Nairobi, Kenya

E. S. Ntiri (✉) · J. Van den Berg  
IPM Program, Unit for Environmental Sciences and Management,  
North-West University, Potchefstroom, South Africa  
e-mail: ensiaw@gmail.com

P.-A. Calatayud · B. P. Le Ru  
UMR IRD 247 Laboratoire Evolution, Génomes, Comportement  
et Ecologie, Diversité, Ecologie et Evolution des Insectes  
Tropicaux, CNRS, 91198, Gif-sur-Yvette, Paris, France

P.-A. Calatayud · B. P. Le Ru  
Université de Paris-Sud, 91405, Orsay, Paris, France

Plant mediation play out in processes such as oviposition - a form of resource utilisation by insects which establishes their relationship with host plants (Thompson and Pellmyr 1991; Bernays and Chapman 1994; Singer 2004). For most phytophagous insect species, especially Lepidoptera, oviposition is an important form of resource use, as the choice of host plants by a female determines the fitness of its offspring (Thompson and Pellmyr 1991; Renwick and Chew 1994). Generally, the physical and chemical properties, as well as the physiological state of the host plant (e.g. infested or non-infested) determine its final acceptability for the female. The final oviposition choices of the different species within a given community can be influenced by induced resistance or susceptibility of a host plant as a result of prior use by one species (Denno and Kaplan 2007). Thus, competition for, or facilitation of the use of the same host plant for final oviposition, can indirectly be mediated by the host plant (Awmack and Leather 2002). For example, some insect species are attracted to feeding-damaged plants for oviposition (Anderson and Alborn 1999; Viswanathan et al. 2005; Facknath 2012), while others are deterred from these plants (Sato et al. 1999; De Moraes et al. 2001; Wise and Weinberg 2002).

Final acceptance for oviposition however, can also be influenced by the state of the gravid female, such as her egg load (quantity), learning through experience and the interplay between these factors (Minkenberget al. 1992; Bernays and Chapman 1994; Cunningham et al. 1998). Furthermore, final acceptance may also be influenced by the presence or absence of natural enemies (Ballabeni et al. 2001; Wiklund and Friberg 2008).

The lepidopteran cereal stemborers *Busseola fusca* (Fuller) (Noctuidae), *Sesamia calamistis* Hampson (Noctuidae) and *Chilo partellus* (Swinhoe) (Crambidae) are among the major pests of cereals in sub-Saharan Africa (Kfir et al. 2002). In East and Southern Africa, where they co-exist, they occur as communities of single or mixed species infesting cereals in crop fields (Van den Berg et al. 1991a; Tefera 2004; Ong'amo et al. 2006a; Krüger et al. 2008). Several studies have been conducted to understand the host plant selection and preference mechanisms of these stemborer species (Päts and Ekbohm 1994; Van den Berg 2006; Van den Berg et al. 2006; Calatayud et al. 2008a). *Busseola fusca* and *C. partellus* have been identified as oligophagous, while *S. calamistis* was found to be polyphagous on wild grasses (Le Ru et al. 2006a, b; Moolman et al. 2014). In Kenya, these three stemborer species occur as

mixed communities in maize fields at the mid-altitudes co-infesting maize stems, but with variation in species dominance with respect to location and season (Guofa et al. 2001; Ong'amo et al. 2006a, b). Despite the spatial and temporal variations in the structure of their communities, there is little information on the type of intraspecific and interspecific interactions that characterise their use of the same host plant during oviposition.

The objective of this study was to address whether the maize host plant plays a mediating role in the establishment of a multi-species community of stemborer pests.

## Materials and methods

### Plants and insects

Maize plants of the hybrid variety, H513 (Simlaw, Kenya Seed Company, Nairobi, Kenya) were grown in plastic pots (12 cm in height × 13 cm in diameter) in a greenhouse at the Dудuville campus of the International Centre of Insect Physiology and Ecology (*icipe*), Nairobi, Kenya. Mean temperatures were approximately 31/17 °C (day/night) with a L12:D12 photoperiod. Plants were used in experiments when they were between 4 and 6 weeks old (6–7 leaf stage, 65–70 cm height and 8–9 mm stem diameter).

Because wild insects are more responsive to plants compared to laboratory-reared insects as shown for *B. fusca* (Calatayud et al. 2008b), only field-collected insects of *B. fusca* (Bf), *S. calamistis* (Sc) and *C. partellus* (Cp) were used in this experiment. For each species, fourth to fifth instar larvae were collected from maize fields. They were then reared on an artificial diet as described by Onyango and Ochieng'-Odero (1994) for *B. fusca* and *S. calamistis*, and Ochieng et al. (1985) for *C. partellus*, until pupation. Pupae were sexed and kept separately in plastic containers (21 × 15 × 8 cm) until adult emergence. A cotton pad moistened with water was placed inside the container, to maintain relative humidity at >80%. The insects were kept in a rearing room at a temperature of 25 ± 0.05 °C, RH of 58.5 ± 0.4%, and photoperiod of L12:D12.

Adult males and females of each species were put together in mating cages (40 × 40 × 63 cm – one for each species), at the onset of the scotophase. Thereafter, the mating status was checked at hourly intervals until end of the scotophase. Pairs of moths that were mating were collected in plastic jars (8 cm high × 5 cm in diameter).

The gravid females were used in experiments during the following night. After each experiment, all used females were dissected to check for the presence of spermatophores in the *bursa copulatrix*, which in Lepidoptera indicates successful mating (Lum 1979). Only the results of females bearing spermatophores were included in the analysis.

For plant infestations, the larvae of *B. fusca*, *C. partellus* and *S. calamistis* were obtained from colonies reared at the Animal Rearing and Containment Unit (ARCU) at *icipe*, Nairobi, Kenya. Colonies were rejuvenated twice a year with field-collected larvae.

#### Infestation of plants for use in laboratory and field trials

Each potted maize plant was manually infested with 12 (third and fourth instar) larvae of the respective stemborer species. These advanced larval instars were used to ensure a high degree of feeding damage within 24 h before release of gravid females to lay eggs on these plants. Moreover, the larvae at this stage can co-occur with adult moths in the field during the maize cropping season as suggested by previous studies (Félix et al. 2011; Ndjomatchoua et al. 2016).

#### Oviposition experiments

##### Laboratory trials

This experiment was carried out to compare the oviposition preferences of females between uninfested and infested maize plants. For each experiment, a larvae-infested maize plant was offered together with an uninfested maize plant in an oviposition cage (70 × 50 × 50 cm). These cages were kept in a room at a temperature of 25 ± 0.05 °C, RH of 58.5 ± 0.4%, and photoperiod of L12:D12. One gravid female was released into the middle of each cage, between the two plants. Each gravid female and maize plant (uninfested and infested) was used only once in the cage. The number of egg batches and the total number of eggs laid on each plant were recorded after two nights (Calatayud et al. 2007). For each species, the following treatment combinations, replicated 20 times, were used:

1. uninfested maize vs *B. fusca* (named Bf)-infested maize plant
2. uninfested maize vs *C. partellus* (named Cp)-infested maize plant

3. uninfested maize vs *S. calamistis* (named Sc)-infested maize plant.

##### Field trials

Field trials were also conducted to confirm the responses obtained from the experiments in the laboratory. These trials were conducted under field conditions in maize fields in the Makuyu village in Murang'a county, Kenya (S 0°55.387, E 37°09.004), where the three species regularly occur together (B. Le Ru, Pers. Obs.). The trials were conducted between May and July 2014, October to December, 2014 and from May to July 2015 (i.e. a total of 15 weeks of field trials). These periods corresponded with the rainfall seasons in Kenya.

Five potted maize plants forming a group were each infested with 12 (third and fourth instar) larvae of *C. partellus*, *B. fusca* or *S. calamistis*, 24 h before taking them to the field. In all, there were four groups of treatments for each trial field (3 groups of 5 potted plants with infestation of each species and one group of 5 potted uninfested plants as the control). Three farmer fields were selected for placement of pot groups. Each field had all the treatment groups (with five plants in each group) distributed along a straight line along the edge of the field. The arrangement of these treatments alternated in each trial field. Three different pheromone traps (Pherobank BV, Wageningen) each specific to *B. fusca*, *S. calamistis* and *C. partellus* sex pheromones, respectively were placed in nearby fields to monitor the male moth flight activity period of each stemborer species in the trial fields. The number of males and their species identification in each pheromone trap was recorded weekly after seed emergence till harvesting. Each potted plant was inspected for the presence of eggs of the different borer species one week after placement in the fields. The experiment was repeated 15 times. The number of egg batches and the total number of eggs were counted and recorded. Eggs were collected and allowed to hatch to identify the species.

##### Data analysis

The number of egg batches and total number of eggs on un-infested and infested plants from the oviposition response experiment in the laboratory were analysed using the quasi-Poisson generalised linear model with logarithmic link to cater for overdispersion in the data. Since the quasi-Poisson model was fitted for each of the

9 trials, Bonferroni correction was used to avoid type I error at  $P = 0.05$ . Thus statistical results were considered significant only if they reach a probability threshold of  $p < 0.05/9 = 0.006$ . All analyses were carried out in R version 3.1.0 (R Development Core Team 2017).

**Results**

Laboratory trials

*Egg batches and total number of eggs oviposited by Busseola fusca*

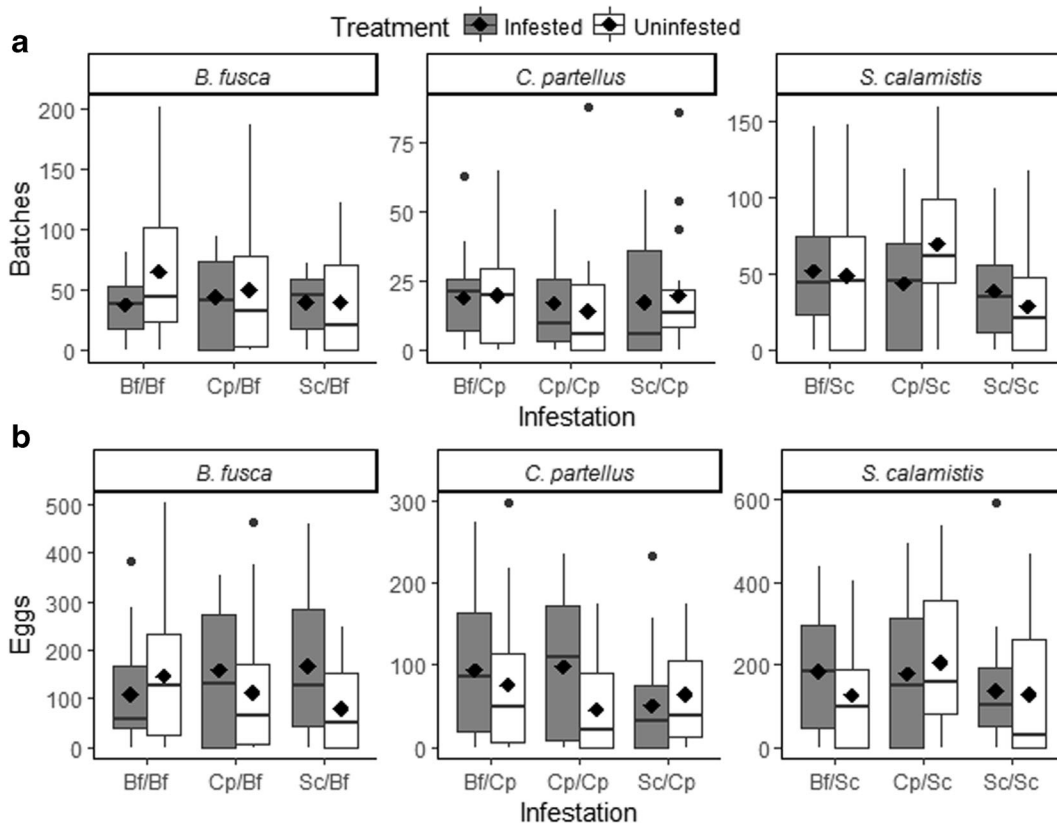
*Busseola fusca* laid significantly more egg batches and eggs on *Sc*-infested plants than on uninfested maize plants ( $F = 3.42$ ,  $P = 0.001$  for egg batches;  $F = 2.31$ ,  $P = 0.02$  for total number of eggs (Fig. 1a, Table 1).

*Egg batches and total number of eggs oviposited by Sesamia calamistis*

For all parameters evaluated, there were no significant differences between uninfested and infested plants either with conspecific's or heterospecific's infestation (Fig. 1b, Table 1).

*Egg batches and total number of eggs oviposited by Chilo partellus*

The mean number of batches laid by *C. partellus* was not significantly different between uninfested plants and plants infested either with conspecific or heterospecifics (Fig. 1c, Table 1). The mean number of eggs laid on plants by *C. partellus* was significantly higher on plants infested by *C. partellus* ( $F = 2.14$ ,  $P = 0.03$ ), but not in the other infested treatments.



**Fig. 1** a Boxplot of egg batches and (b) Total number of eggs oviposited on infested and uninfested maize plants by *Busseola fusca* (Bf), *Sesamia calamistis* (Sc) and *Chilo partellus* (Cp) moths. The mean for each boxplot is represented by the solid

diamonds within each box. Solid circles represent the outliers for corresponding dataset. (x(y)/x: Moth species infesting/species ovipositing). Each treatment was replicated 20 times

**Table 1** Statistical values indicating significance of differences between treatments of uninfested and infested maize plants by *Busseola fusca* (*Bf*), *Sesamia calamistis* (*Sc*) and *Chilo partellus* (*Cp*) in each treatment

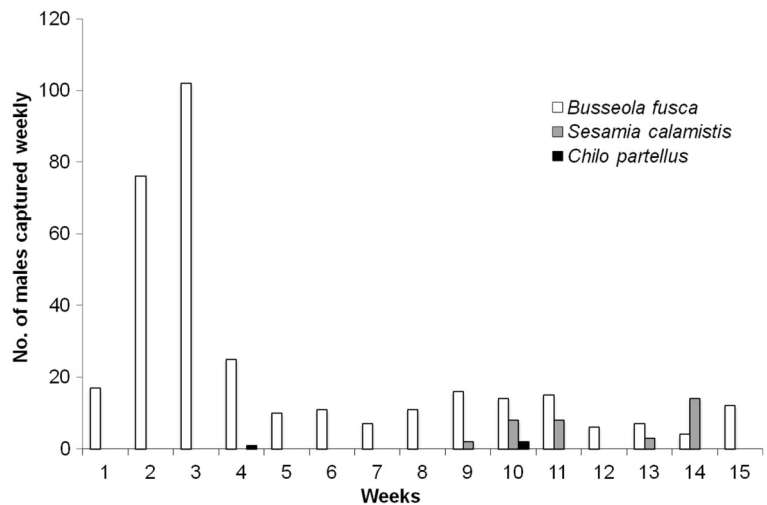
Species	Treatment comparisons	Egg batches		Total eggs	
		F	p value	F	p value
<i>Busseola fusca</i>	<i>Bf</i> -infested vs uninfested	0.67	0.51	2.14	0.35
	<i>Sc</i> -infested vs uninfested	3.42	0.001	2.31	0.02
	<i>Cp</i> -infested vs uninfested	1.35	0.18	1.06	0.30
<i>Sesamia calamistis</i>	<i>Sc</i> -infested vs uninfested	0.38	0.71	0.19	0.85
	<i>Bf</i> -infested vs uninfested	0.95	0.35	1.30	0.20
	<i>Cp</i> -infested vs uninfested	0.16	0.87	0.50	0.62
<i>Chilo partellus</i>	<i>Cp</i> -infested vs uninfested	1.86	0.07	2.14	0.03
	<i>Bf</i> -infested vs uninfested	1.37	0.18	0.64	0.52
	<i>Sc</i> -infested vs uninfested	0.91	0.37	0.67	0.51

The *p* values in the table are compared with threshold *p* = 0.006 for Bonferroni correction

**Field trials**

The numbers of male moths captured inside pheromone traps differed largely between species (Fig. 2). A higher number of *B. fusca* moths (89% of total capture) were recorded than the other species. This suggests *B. fusca* to be the dominant species for the duration of the field experiments (Fig. 2).

**Fig. 2** Number of males of the different stemborer species captured per week with pheromone traps in maize farms. Trials were conducted between May–July 2014, October–December, 2014 and May–July 2015



Maize plants of each infestation treatment were oviposited on by wild moths in the field (16 in total). Of these, *B. fusca* oviposited on each plant with the different infestation treatment (14 plants), whereas *S. calamistis* oviposited on plants only infested by *C. partellus* (2 plants). Only 3 uninfested plants received eggs during the whole field trial period. No eggs from *C. partellus* were recorded.

**Discussion**

The results of this study provide an insight into one possible mechanism responsible for the incidence of multi-species larval infestations in field cereal crops, through the oviposition choices made by the adult females.

To the best of our knowledge this is the first report on the oviposition responses from a community of different stemborer species that co-infest maize plants. The results from the laboratory trials showed that none of the three female species avoided plants previously infested either with conspecific's or heterospecific's larvae. Similarly, despite the low presence of *C. partellus* and *S. calamistis* moths, data from the field trials, showed oviposition by the wild moths on infested maize plants either with conspecific's or heterospecific's infestation; indicating that the wild moths were not avoiding plants previously infested by larvae.

Although such enhancement of oviposition by *C. partellus* on maize plants by larval conspecific infestation has already been reported by Kumar (1986), the results for the other stemborer species contrast with the



observation made by Kfir (1997) who reported that *B. fusca* avoided ovipositing on maize already infested by heterospecifics and also with the suggestion by Ndemah et al. (2001) that *S. calamistis* did not oviposit on plants containing egg batches or that were damaged by borer larvae.

Studies on plant induced responses to insect herbivory have mainly reported on their defensive role (e.g. Kessler and Baldwin 2001; Arimura et al. 2005). The results of this study on the other hand, contributes to studies that have shown that prior feeding probably induces susceptibility (Ohgushi 2005; Denno and Kaplan 2007) in the maize host plant, facilitating oviposition by subsequent species (Agrawal and Sherriffs 2001; Horgan 2012). Induced plant defences affect the abundance of generalists more than specialists when these form a community that subsequently utilises the same host plant (Poelman et al. 2008). If plant mediation is a dominant factor in the oviposition selection process among the three stemborer species, induced susceptibility should promote the abundance not only of the oligophagous species (*B. fusca* and *C. partellus*), but also the polyphagous *S. calamistis* (Sensu Le Ru et al. 2006b) to co-exist and utilise the same maize host plant.

The non-avoidance of infested maize plants for oviposition may also suggest an egg aggregation mechanism employed by these communities of maize stemborer species for high egg and larval densities, possibly to dilute the risk of parasitoid attack (Williams et al. 2001; Rohlf and Hoffmeister 2004), mortality from desiccation (Klok and Chown 1999; Prokopy and Roitberg 2001) or for social thermoregulation (Klok and Chown 1999) – some of the benefits of the Allee effect (Stephens and Sutherland 1999; Stephens et al. 1999). In fact, results from some field samplings have shown the presence of multiple egg batches of *B. fusca* on the same plant (Van Rensburg et al. 1987; Ndemah et al. 2001). Furthermore, field results have also shown a clustered distribution of these stemborer species among cereal host plants (Overholt et al. 1994; Ndemah et al. 2001; Gounou and Schulthess 2004). This phenomenon indicates a trait of adult female stemborer moths, (at least for *B. fusca*) to oviposit on plants already infested by conspecifics (Ndjomatchoua et al. 2016). For *B. fusca* and *C. partellus*, overcrowding on a host plant may not be a challenge to larval survival, due to the ability of early instar larvae to disperse to nearby plants (Van den Berg et al. 1991b; Ndemah et al. 2001; Erasmus et al. 2016). Generally, for most insect

species, the ecological cost of ovipositing on an already infested host plant is smaller than in an enemy-dense host plant, as competition may only lower the fitness level of offspring, but enemy-dense space may result in death (Dicke and Loon 2000).

The results of this study also show that the behaviour of the three stemborer species deviates from that as proposed by the optimal oviposition theory, which predicts that an adult female would choose to oviposit on an unoccupied host plant and avoid infested host, to safeguard her offspring from competition (Thompson 1988; Scheirs and De Bruyn 2002; Gripenberg et al. 2010). Our results showed that females within the studied stemborer complex oviposited on and in some cases significantly preferred already infested plants on which their offspring could face competition from larvae already present. It is also an emerging knowledge that some insects oviposit on plants, not for the enhancement of offspring performance, but rather of the adults (Scheirs and De Bruyn 2002). Furthermore, aside properties of the host plants (Bernays and Chapman 1994; Awmack and Leather 2002), the short life span (3–5 days), as well as neural limitations of insect species (Larsson and Ekblom 1995; Bernays 2001), egg load of the female (Minkenberg et al. 1992) and learning through experience (Cunningham et al. 1999) can also explain this observation.

This study has shown that one possible mechanism responsible for the incidence of multi-species larval infestations in field cereal crops is through host plant mediation. The adult females prefer to oviposit on host plants with prior infestations. The other mechanism is through the movement of larvae from their initial host plant to nearby plants (Kaufmann 1983; Berger 1989; Van den Berg et al. 1991b; Erasmus et al. 2016). Although not considered in this study, induced plant volatiles from larvae feeding (HIPVs) (Dicke and Loon 2000; Bruce et al. 2005) and volatiles induced by insect egg deposition (OIPVs) on host plants (Hilker and Meiners 2002) have been identified to play influencing roles in the oviposition responses by phytophagous insects which utilise infested host plant. These induced plant volatiles may be involved in the oviposition choices made by stemborer females. Further studies to elucidate the roles of HIPVs and OIPVs from maize on the oviposition choices made by female stemborer community should deepen our understanding of the mechanisms responsible for the multi-species infestation in maize fields.

**Acknowledgements** This work was supported by the Swedish International Development Cooperation Agency [Contribution no. 75000529], through the Capacity Building for Science Education and Research Cooperation in Africa (CBSERCA) project of the CB & ID programme of icipe. It was also supported by the Ministry of Foreign Affairs of Finland sponsorship through the Climate Change Impacts of Ecosystem Services and Food Security in Eastern Africa (CHIESA) project. We further acknowledge the technical assistance provided by staff of the IRD-NSBB project at icipe and also of the stem borer rearing unit of the ARCU-icipe for the rearing and supply of insect larvae for this experiment. We also thank Daisy Salifu of the Bio-Statistic unit of icipe, for the statistical guidance for this work. Finally, we are grateful to Fritz Schulthess for his reading to improve the manuscript.

**Author contribution** ESN, PAC and BPL conceived research.

ESN and BM conducted experiments.

ESN analysed data and conducted statistical analyses.

ESN, PAC, BM, JVD and BPL contributed to writing of manuscript.

BPL secured funding.

All authors read and approved the manuscript.

#### Compliance with ethical standards

**Conflict of interest** The authors declare no conflicting interests with regard to the work as carried out and reported in this manuscript.

#### References

- Agrawal, A. A., & Sherriffs, M. F. (2001). Induced plant resistance and susceptibility to late-season herbivores of wild radish. *Annals of the Entomological Society of America*, *94*, 71–75.
- Anderson, P., & Alborn, H. (1999). Effects on oviposition behaviour and larval development of *Spodoptera littoralis* by herbivore-induced changes in cotton plants. *Entomologia Experimentalis et Applicata*, *92*, 45–51.
- Arimura, G.-I., Kost, C., & Boland, W. (2005). Herbivore-induced, indirect plant defences. *Biochimica et Biophysica Acta (BBA)-Molecular and Cell Biology of Lipids*, *1734*, 91–111.
- Awmack, C. S., & Leather, S. R. (2002). Host plant quality and fecundity in herbivorous insects. *Annual Review of Entomology*, *47*, 817–844.
- Ballabeni, P., Włodarczyk, M., & Rahier, M. (2001). Does enemy-free space for eggs contribute to a leaf beetle's oviposition preference for a nutritionally inferior host plant? *Functional Ecology*, *15*, 318–324.
- Berger, A. (1989). Ballooning activity of *Chilo partellus* larvae in relation to size of mother, egg batches, eggs and larvae and age of mother. *Entomologia Experimentalis et Applicata*, *50*, 125–132.
- Bernays, E. (2001). Neural limitations in phytophagous insects: Implications for diet breadth and evolution of host affiliation. *Annual Review of Entomology*, *46*, 703–727.
- Bernays, E. A., & Chapman, R. F. (1994). *Host-plant selection by phytophagous insects*. New York: Chapman & Hall.
- Bruce, T. J., Wadhams, L. J., & Woodcock, C. M. (2005). Insect host location: A volatile situation. *Trends in Plant Science*, *10*, 269–274.
- Bruno, J. F., Stachowicz, J. J., & Bertness, M. D. (2003). Inclusion of facilitation into ecological theory. *Trends in Ecology & Evolution*, *18*, 119–125.
- Calatayud, P.-A., Guénégo, H., Le Ru, B., Silvain, J.-F., & Frérot, B. (2007). Temporal patterns of emergence, calling behaviour and oviposition period of the maize stem borer, *Busseola fusca* (Fuller) (Lepidoptera: Noctuidae). *Annales de la Société Entomologique de France*, *43*, 63–68.
- Calatayud, P. A., Guénégo, H., Ahuya, P., Wanjoya, A., Le Ru, B., Silvain, J. F., & Frérot, B. (2008a). Flight and oviposition behaviour of the African stem borer, *Busseola fusca*, on various host plant species. *Entomologia Experimentalis et Applicata*, *129*, 348–355.
- Calatayud, P. A., Juma, G., Njagi, P., Faure, N., Calatayud, S., Dupas, S., Le Ru, B., Magoma, G., Silvain, J. F., & Frérot, B. (2008b). Differences in mate acceptance and host plant recognition between wild and laboratory-reared *Busseola fusca* (Fuller). *Journal of Applied Entomology*, *132*, 255–264.
- Cunningham, J. P., Jallow, M. F., Wright, D. J., & Zalucki, M. P. (1998). Learning in host selection in *Helicoverpa armigera* (Hübner) (Lepidoptera: Noctuidae). *Animal Behaviour*, *55*, 227–234.
- Cunningham, J. P., Zalucki, M. P., & West, S. A. (1999). Learning in *Helicoverpa armigera* (Lepidoptera: Noctuidae): A new look at the behaviour and control of a polyphagous pest. *Bulletin of Entomological Research*, *89*, 201–207.
- De Moraes, C. M., Mescher, M. C., & Tumlinson, J. H. (2001). Caterpillar-induced nocturnal plant volatiles repel conspecific females. *Nature*, *410*, 577–580.
- Denno, R. F., & Kaplan, I. (2007). Plant-mediated interactions in herbivorous insects: Mechanisms, symmetry, and challenging the paradigms of competition past pp. In *Ecological communities: plant mediation in indirect interaction webs* (pp. 19–50). Cambridge: Cambridge University Press.
- Denno, R. F., McClure, M. S., & Ott, J. R. (1995). Interspecific interactions in phytophagous insects: Competition reexamined and resurrected. *Annual Review of Entomology*, *40*, 297–331.
- Dicke, M., & Loon, J. J. (2000). Multitrophic effects of herbivore-induced plant volatiles in an evolutionary context. *Entomologia Experimentalis et Applicata*, *97*, 237–249.
- Erasmus, A., Marais, J., & Van den Berg, J. (2016). Movement and survival of *Busseola fusca* (Lepidoptera: Noctuidae) larvae within maize plantings with different ratios of non-Bt and Bt seed. *Pest Management Science*, *72*, 2287–2294.
- Facknath, S. (2012). Study of herbivore response to the presence of conspecifics and heterospecifics in an insect-host plant relationship. *University of Mauritius Research Journal*, *18*, 250–274.
- Faeth, S. H. (1986). Indirect interactions between temporally separated herbivores mediated by the host plant. *Ecology*, *67*, 479–494.

- Félix, A.-E., Calatayud, P.-A., Le Ru, B., Silvain, J.-F., & Frérot, B. (2011). Sex pheromone composition and reproductive isolation in two *Busseola* species (Lepidoptera: Noctuidae) in Kenya. *Chemoecology*, 21, 107–111.
- Fisher, A., Hartley, S., & Young, M. (2000). Direct and indirect competitive effects of foliage feeding guilds on the performance of the birch leaf-miner *Eriocrania*. *Journal of Animal Ecology*, 69, 165–176.
- Gounou, S., & Schulthess, F. (2004). Spatial distribution of lepidopterous stem borers on indigenous host plants in West Africa and its implications for sampling schemes. *African Entomology*, 12, 171–178.
- Gripenberg, S., Mayhew, P. J., Parnell, M., & Roslin, T. (2010). A meta-analysis of preference–performance relationships in phytophagous insects. *Ecology Letters*, 13, 383–393.
- Guofa, Z., Overholt, W. A., & Mochiah, M. B. (2001). Changes in the distribution of lepidopteran maize stemborers in Kenya from the 1950s to 1990s. *International Journal of Tropical Insect Science*, 21, 395–402.
- Hilker, M., & Meiners, T. (2002). Induction of plant responses to oviposition and feeding by herbivorous arthropods: A comparison. *Entomologia Experimentalis et Applicata*, 104, 181–192.
- Horgan, F. (2012). Effects of leaf damage on oviposition choice in an invasive paropsine beetle. *Journal of Applied Entomology*, 136, 271–281.
- Kaplan, I., & Denno, R. F. (2007). Interspecific interactions in phytophagous insects revisited: A quantitative assessment of competition theory. *Ecology Letters*, 10, 977–994.
- Kaufmann, T. (1983). Behavioral biology, feeding habits, and ecology of three species of maize stem-borers: *Eldana saccharina* (Lepidoptera: Pyralidae), *Sesamia calamistis* and *Busseola fusca* (Noctuidae) in Ibadan, Nigeria, West Africa [*Zea mays*]. *Journal of the Georgia Entomological Society*, 18, 259–272.
- Kessler, A., & Baldwin, I. T. (2001). Defensive function of herbivore-induced plant volatile emissions in nature. *Science*, 291, 2141–2144.
- Kfir, R. (1997). Competitive displacement of *Busseola fusca* (Lepidoptera: Noctuidae) by *Chilo partellus* (Lepidoptera: Pyralidae). *Annals of the Entomological Society of America*, 90, 619–624.
- Kfir, R., Overholt, W. A., Khan, Z. R., & Polaszek, A. (2002). Biology and management of economically important lepidopteran cereal stem borers in Africa. *Annual Review of Entomology*, 47, 701–731.
- Klok, C., & Chown, S. (1999). Assessing the benefits of aggregation: Thermal biology and water relations of anomalous emperor moth caterpillars. *Functional Ecology*, 13, 417–427.
- Krüger, W., Van den Berg, J., & Van Hamburg, H. (2008). The relative abundance of maize stem borers and their parasitoids at the Tshiombo irrigation scheme in Venda, South Africa. *South African Journal of Plant and Soil*, 25, 144–151.
- Kumar, H. (1986). Enhancement of oviposition by *Chilo partellus* (Swinhoe)(Lepidoptera: Pyralidae) on maize plants by larval infestation. *Applied Entomology and Zoology*, 21, 539–545.
- Larsson, S., & Ekblom, B. (1995). Oviposition mistakes in herbivorous insects: Confusion or a step towards a new host plant? *Oikos*, 72, 155–160.
- Le Ru, B. P., Ong'amo, G. O., Moyal, P., Muchugu, E., Ngala, L., Musyoka, B., Abdullah, Z., Matama-Kauma, T., Lada, V. Y., & Pallangyo, B. (2006a). Geographic distribution and host plant ranges of east African noctuid stem borers. *Annales de la Société Entomologique de France*, 42, 353–361.
- Le Ru, B. P., Ong'amo, G. O., Moyal, P., Ngala, L., Musyoka, B., Abdullah, Z., Cugala, D., Defabachew, B., Haile, T., & Matama, T. K. (2006b). Diversity of lepidopteran stem borers on monocotyledonous plants in eastern Africa and the islands of Madagascar and Zanzibar revisited. *Bulletin of Entomological Research*, 96, 555–563.
- Lum, P. (1979). Degeneration of ova in the bulla seminalis of Lepidoptera. *Journal of Insect Physiology*, 25, 595–599.
- Memmott, J., Gibson, R., Carvalheiro, L., Henson, K., Heleno, R., Lopezaraiza, M., Pearce, S., & Pearce, S. (2007). The conservation of ecological interactions. In *Insect Conservation Biology* (pp. 226–244). London: The Royal Entomological Society.
- Minkenber, O. P., Tatar, M., & Rosenheim, J. A. (1992). Egg load as a major source of variability in insect foraging and oviposition behavior. *Oikos*, 65, 134–142.
- Moolman, J., Van den Berg, J., Conlong, D., Cugala, D., Siebert, S., & Le Ru, B. (2014). Species diversity and distribution of lepidopteran stem borers in South Africa and Mozambique. *Journal of Applied Entomology*, 138, 52–66.
- Ndemah, R., Schulthess, F., Poehling, M., & Borgemeister, C. (2001). Spatial dynamics of lepidopterous pests on *Zea mays* (L.) and *Pennisetum purpureum* (Moench) in the forest zone of Cameroon and their implications for sampling schemes. *Journal of Applied Entomology*, 125, 507–514.
- Ndjomatchoua, F. T., Tonnang, H. E., Plantamp, C., Campagne, P., Tchawoua, C., & Le Ru, B. P. (2016). Spatial and temporal spread of maize stem borer *Busseola fusca* (Fuller)(Lepidoptera: Noctuidae) damage in smallholder farms. *Agriculture, Ecosystems & Environment*, 235, 105–118.
- Ochieng, R., Onyango, F., & Bungu, M. (1985). Improvement of techniques for mass-culture of *Chilo partellus* (Swinhoe). *International Journal of Tropical Insect Science*, 6, 425–428.
- Ohgushi, T. (2005). Indirect interaction webs: Herbivore-induced effects through trait change in plants. *Annual Review of Ecology, Evolution, and Systematics*, 36, 81–105.
- Ong'amo, G. O., Le Ru, B. P., Dupas, S., Moyal, P., Muchugu, E., Calatayud, P.-A., & Silvain, J.-F. (2006a). The role of wild host plants in the abundance of lepidopteran stem borers along altitudinal gradient in Kenya. *Annales de la Société Entomologique de France*, 42, 363–370.
- Ong'amo, G. O., Le Ru, B. P., Dupas, S., Moyal, P., Calatayud, P.-A., & Silvain, J.-F. (2006b). Distribution, pest status and agro-climatic preferences of lepidopteran stem borers of maize in Kenya. *Annales de la Société Entomologique de France*, 42, 171–177.
- Onyango, F. O., & Ochieng'-Odero, J. P. R. (1994). Continuous rearing of the maize stem borer *Busseola fusca* on an artificial diet. *Entomologia Experimentalis et Applicata*, 73, 139–144.
- Overholt, W., Ogedah, K., & Lammers, P. (1994). Distribution and sampling of *Chilo partellus* (Lepidoptera: Pyralidae) in maize and sorghum on the Kenya coast. *Bulletin of Entomological Research*, 84, 367–378.
- Päts, P., & Ekblom, B. (1994). Distribution of *Chilo partellus* (Lepidoptera: Pyralidae) egg batches on maize. *Journal of Insect Behavior*, 7, 29–41.

- Poelman, E. H., Broekgaarden, C., Van Loon, J. J., & Dicke, M. (2008). Early season herbivore differentially affects plant defence responses to subsequently colonizing herbivores and their abundance in the field. *Molecular Ecology*, *17*, 3352–3365.
- Prokopy, R. J., & Roitberg, B. D. (2001). Joining and avoidance behavior in nonsocial insects. *Annual Review of Entomology*, *46*, 631–665.
- R Development Core Team (2017). R: A language and environment for statistical computing. R Foundation for statistical computing, Vienna, Austria. URL <http://www.R-project.org/>
- Renwick, J., & Chew, F. (1994). Oviposition behavior in Lepidoptera. *Annual Review of Entomology*, *39*, 377–400.
- Rohlf, M., & Hoffmeister, T. S. (2004). Spatial aggregation across ephemeral resource patches in insect communities: An adaptive response to natural enemies? *Oecologia*, *140*, 654–661.
- Sato, Y., Yano, S., Takabayashi, J., & Ohsaki, N. (1999). *Pieris rapae* (Lepidoptera: Pieridae) females avoid oviposition on *Rorippa indica* plants infested by conspecific larvae. *Applied Entomology and Zoology*, *34*, 333–337.
- Scheirs, J., & De Bruyn, L. (2002). Integrating optimal foraging and optimal oviposition theory in plant–insect research. *Oikos*, *96*, 187–191.
- Singer, M.C. (2004). Oviposition preference: its definition, measurement and correlates, and its use in assessing risk of host shifts. *XI International Symposium on Biological Control of Weeds* 235.
- Speight, M. R., Hunter, M. D., & Watt, A. D. (2008). *Ecology of insects: Concepts and applications*. UK: John Wiley & Sons Ltd.
- Stephens, P. A., & Sutherland, W. J. (1999). Consequences of the Allee effect for behaviour, ecology and conservation. *Trends in Ecology & Evolution*, *14*, 401–405.
- Stephens, P. A., Sutherland, W. J., & Freckleton, R. P. (1999). What is the Allee effect? *Oikos*, *87*, 185–190.
- Tefera, T. (2004). Lepidopterous stem borers of sorghum and their natural enemies in eastern Ethiopia. *Tropical Science*, *44*, 128–130.
- Thompson, J. N. (1988). Evolutionary ecology of the relationship between oviposition preference and performance of offspring in phytophagous insects. *Entomologia Experimentalis et Applicata*, *47*, 3–14.
- Thompson, J. N., & Pellmyr, O. (1991). Evolution of oviposition behavior and host preference in Lepidoptera. *Annual Review of Entomology*, *36*, 65–89.
- Van den Berg, J. (2006). Oviposition preference and larval survival of *Chilo partellus* (Lepidoptera: Pyralidae) on Napier grass (*Pennisetum purpureum*) trap crops. *International Journal of Pest Management*, *52*, 39–44.
- Van den Berg, J., Van Rensburg, J., & Van der Westhuizen, M. (1991a). The effect of single and mixed populations of *Busseola fusca* (Lepidoptera: Noctuidae) and *Chilo partellus* (Lepidoptera: Pyralidae) on damage to grain sorghum. *Journal of the Entomological Society of Southern Africa*, *54*, 231–242.
- Van den Berg, J., Van Rensburg, J., & Pringle, K. (1991b). Comparative injuriousness of *Busseola fusca* (Lepidoptera: Noctuidae) and *Chilo partellus* (Lepidoptera: Pyralidae) on grain sorghum. *Bulletin of Entomological Research*, *81*, 137–142.
- Van den Berg, J., De Bruyn, A., & Van Hamburg, H. (2006). Oviposition preference and survival of the maize stem borer, *Busseola fusca* (Lepidoptera: Noctuidae), on Napier grasses, *Pennisetum spp.*, and maize. *African Entomology*, *14*, 211–218.
- Van Rensburg, J., Walters, M., & Giliomee, J. (1987). Ecology of the maize stalk borer, *Busseola fusca* (Fuller) (Lepidoptera: Noctuidae). *Bulletin of Entomological Research*, *77*, 255–269.
- Viswanathan, D. V., Narwani, A. J., & Thaler, J. S. (2005). Specificity in induced plant responses shapes patterns of herbivore occurrence on *Solanum dulcamara*. *Ecology*, *86*, 886–896.
- Wiklund, C., & Friberg, M. (2008). Enemy-free space and habitat-specific host specialization in a butterfly. *Oecologia*, *157*, 287–294.
- Williams, I. S., Jones, T. H., & Hartley, S. E. (2001). The role of resources and natural enemies in determining the distribution of an insect herbivore population. *Ecological Entomology*, *26*, 204–211.
- Wise, M. J., & Weinberg, A. M. (2002). Prior flea beetle herbivory affects oviposition preference and larval performance of a potato beetle on their shared host plant. *Ecological Entomology*, *27*, 115–122.
- Wootton, J. T., & Emmerson, M. (2005). Measurement of interaction strength in nature. *Annual Review of Ecology, Evolution, and Systematics*, *36*, 419–444.