



## From the chair of the Sponsoring Group of *icipe*

Dear colleagues and friends of *icipe*,

I was pleased to be invited to join the recent meeting of *icipe*'s Governing Council, at their beautiful Mbita campus in western Kenya.

Throughout the week of meetings with staff and students, I was very impressed by *icipe*'s achievements in 2014, especially considering that the Director General, Dr Segenet Kelemu, has been in the role for just over one year.

A record number of publications shows that *icipe*'s science is well-regarded and making an impact, and the launch of their new African Reference Laboratory for Bee Health shows that the Centre is taking a real leadership role in African science.

*icipe* now needs to focus on what it does best – African insect science for food and health – putting its resources into tackling the issues where it can make the greatest impact.

The Centre should also be looking outward, drawing in more of the best students from Kenya and from across Africa for its student programmes, the African Regional Postgraduate Programme in Insect Science (ARPPIS) and the Dissertation Research Internship Programme (DRIP).

To achieve these things, the Governing Council and *icipe* management are rightly examining the institution from top to bottom, overhauling the systems and supports that allow its researchers to do world-quality science.

As well, the centre's Vision and Strategy 2013-2020, now ratified by the Governing Council and published online, sets out a roadmap for much future success for *icipe*.

Early in the new year, I hope to organise a meeting for *icipe*'s donors and supporters in Nairobi to share the outcomes from the Governing Council's meeting.

To all of you, have a merry Christmas and a happy new year. I look forward to hearing great things from *icipe* in 2015.

**Dr Gity Behravan**  
**Chair of the Sponsoring Group for *icipe***  
**Senior Research Advisor and First Secretary: Regional Research Cooperation Embassy of Sweden in Kenya**

## IN THIS ISSUE

- Protecting Africa's bees for food security and health .....2
- Annual meeting of the Governing Council of *icipe* .....3
- Vision and Strategy document.....3
- Improving the health of livestock to boost milk production.....4
- Training a new generation of African scientists in big data analytics: THRiVE bioinformatics workshop .....4
- Caring for Africa's dryland environments .....5
- *icipe* in the media.....5
- Recent publications .....6
- *icipe* Director General visits Stockholm, London .....7
- Dr Charles Midega heading to Cornell on prestigious award .....7
- Dr Baldwyn Torto joins the AAS Commission on Science Education.....7
- Three in a row for *icipe* at the International Congress of Entomology ....7
- Congratulations to Vincent Nyasembe: winner of the prize for top student paper at *icipe*, 2014 .....8
- Farewell and thank you to outgoing Governing Council members .....9
- Welcoming new staff to *icipe* .....9

## *icipe* by the numbers:

number of graduate students hosted by *icipe* in 2014

136

total number of publications from *icipe* 2014

121

percentage of *icipe* papers published in open-source journals

39%

tonnes of honey produced by *icipe*-supported beekeepers in Kenya and Ethiopia

199

number of media stories so far following the launch of the new bee health laboratory

55

reduction in mastitis cases in livestock protected by *icipe* nets in western Kenya

50%



## Protecting Africa's bees for food security and health

In November, we were very proud to welcome His Excellency William Ruto, Deputy President of Kenya, to officially open our new [African Reference Laboratory for Bee Health](#) before a crowd of Ambassadors, High Commissioners, government officials and science leaders from Africa and around the world.

In Africa and across the world, bees are crucial for agriculture and the environment. More than 70% of the world's major crops rely on bee pollination to grow and flourish. Bees also provide much-needed extra income for smallholder farmers, who sell honey, wax and other products.

However, honeybee populations across the world are struggling, with attacks from parasites such as the varroa mite, infection with disease, and the dreaded Colony Collapse Disorder, which has decimated bee populations in Europe and the USA. The Centre will work to understand and prevent these issues from taking hold in Africa.

In partnership with the African Union Interafrican Bureau for Animal Resources (AU-IBAR), this new laboratory will bring together research into bee health from across Africa and the world, helping us to better understand these special creatures, protecting African bees for global food security and health and ensuring access to high value international markets for African honey and bee products.

In his speech, the Deputy President thanked *icipe's* donors for

supporting the laboratory, saying: "I am glad to note that the international community is progressively giving greater attention to the needs and the contribution of smallholder farmers."

Representatives attended the launch from many of our donors and donor countries. This laboratory, and our bee health programme, would not have been possible without their support.

The laboratory was furnished and equipped with funding from the European Union, who have also committed €13.1 million over three years to support our bee research.

It was constructed with the support of *icipe's* core donors: The German Federal Enterprise for International Cooperation (GIZ) on behalf of the German Federal Ministry for Economic Cooperation and Development (BMZ), the Government of Kenya, the Swedish International Development Cooperation (Sida), the Swiss Agency for Development and Cooperation (SDC) and UK Aid.

More information about our bee health programme and the new laboratory is available from our website: <http://www.icipe.org/index.php/news/882-bee-health-launch.html>

For more photos from the launch, visit our Flickr page: <https://www.flickr.com/photos/124591391@N03/sets/72157649047750112/>



His Excellency William Ruto, Deputy President of the Republic of Kenya, opens the new facility



The Deputy President and his staff walk with *icipe* Governing Council chair Prof Bill Hansson, Director General Dr Segenet Kelemu, bee health programme leader Prof Suresh Raina and His Excellency Lodewijk Briët, European Union Ambassador to Kenya



The Deputy President learns about our bee artificial insemination work from *icipe's* Loise Kawira Njeru, as H.E. Jacques Pitteloud, Ambassador of Switzerland to Kenya looks on.



The Deputy President speaks with Mercy Kiyapyap, a honey and beeswax producer from West Pokot.





## Annual meeting of the Governing Council of *icipe*

November also saw the annual meeting of the Governing Council of *icipe*, held this year in Mbita, western Kenya, at our Thomas Odhiambo Campus.

Our 2014 board comprised of leaders in science, business, law and government from across the world: Sweden, the United Kingdom, Switzerland, the Netherlands, the USA, Japan, China, Nigeria, Liberia and two representatives from Kenya.

Their programme for the week included presentations from our researchers, showing the breadth of work going on at *icipe*. They met with management and representatives of the staff association and the student body.

The board also made time to relax and get to know some of the staff, hosting cocktail parties in Nairobi and Mbita. These events were an opportunity to celebrate *icipe* and its people.

Awards were presented to our top students, and outgoing Chair Prof. John Pickett serenaded us with a trumpet solo in lieu of a farewell speech. We also said goodbye to Prof Janice Jiggins, a long-time board member.

Three new members joined the board:

- Assoc. Prof. Elske van der Fliert, a Dutch social scientist based at the University of Queensland in Australia
- Dr Ylva Hillbur, from Sweden, the Deputy Director General for Research at the International Institute of Tropical Agriculture (IITA) in Nigeria
- Dr Carlos Lascano, a Colombian Emeritus Scientist at the International Center for Tropical Agriculture (CIAT) in Colombia



*icipe* management and Governing Council members L-R: Assoc Prof. Elske van der Fliert, Prof. Gity Behevrán, Dr Carlos Lascano, Prof. Noboru Minakawa, Prof. Janice Jiggins, Prof. Canute Khamala, Dr Lukas Bertschinger, Prof. Ylva Hillbur, Dr Segenet Kelemu, Prof. Bill Hansson, Mr Gatigwa Kimana, Prof. John Pickett, Mr Nicholas Retsinas, Prof. Anthony Youdeowei, Dr Kongming Wu, Dr Chris Prideaux, Mr Donald Kaniaru



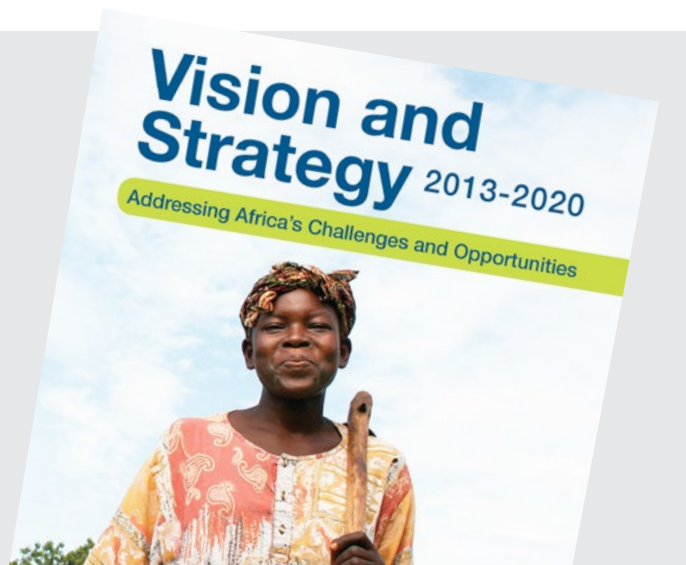
L-R: Dr Carlos Lascano, Dr Segenet Kelemu, Mr Donald Kaniaru, Prof. John Pickett, Prof. Bill Hansson

## Vision and Strategy document

At their recent meeting, the Governing Council of *icipe* ratified our Vision and Strategy 2013–2020, which outlines where we see the Centre in 2020 and how we plan to get there.

In developing this strategy, *icipe* initiated an external review of its research, capacity building, and governance and also sought the views of some of our main stakeholders. The insightful recommendations from both the reviewers and stakeholders have proven invaluable in framing this strategy and we thank those who contributed to this document for their dedication and constructive comments.

You can read the strategy at: [http://www.icipe.org/images/stories/pdf/about\\_us/icipe\\_Vision\\_and\\_Strategy\\_2013-2020.pdf](http://www.icipe.org/images/stories/pdf/about_us/icipe_Vision_and_Strategy_2013-2020.pdf)





## Improving the health of livestock to boost milk production

An *icipe* project to protect cattle in zero-grazing dairy enterprises from biting flies has seen milk production increase by a factor of three and cases of mastitis cut by half.

Their solution was simple: insecticide-treated nets were set up around the stalls that house cattle in a number of farms in western Kenya. These Livestock Protective Net Fences saw a reduction in biting fly numbers of more than 80 per cent.

Aside from the documented health benefits for cattle, farmers reported that cattle were calmer, fed better and were easier to milk. The healthier cattle produced more milk, boosting farmer incomes. One in five of the farmers involved have already invested in better breeds of animals, which will lead to even greater benefits.

As this pilot project comes to a close at the end of 2014, the team recently held a workshop in Kisii, Kenya, to discuss how these results can be repeated for dairy farmers in other regions. There is already high demand for the nets, so the question now is how to scale out the technology to reach more farmers.

The meeting brought together representatives from the scientific team, county government, agricultural extension services, NGOs and the private sector, many of which have a role in sharing new agricultural practices with farmers across Kenya. The participants also visited farmers who had taken part in the trial.



Zero-grazing unit of dairy cows in Kisii protected with livestock protective fence (LPF)

You can read more about the work from project partners FAO: <http://www.fao.org/news/story/en/item/173224/icode/>

## Training a new generation of African scientists in big data analytics: THRiVE bioinformatics workshop

There is a growing bioinformatics scene in Africa, and *icipe* is a part of it, partnering with researchers from Cambridge to host a recent workshop to share the tools of the genomics revolution and train more African scientists in big data analytics.

Supported by the [Cambridge-Africa Programme](#), the aim of the course was to teach programming and analytics skills for working with DNA sequencing data.

*icipe* worked with the charity [TRenD in Africa](#), which supports university level teaching and research in natural sciences through lab equipment donations and hands-on training programmes.

“The long term ambition is to pass on the skills and help train a new generation of computational biologists in Africa,” said course co-organiser Dr Jelena Aleksic, a researcher at the Cambridge Stem Cell

Institute. “This is a particularly exciting area of research, and there is much enthusiasm from the students.”

“It was also an opportunity for *icipe* researchers to share their knowledge of bioinformatics in the African context, building on experience from such projects as the *Glossina* genome project, which also included *icipe* and Cambridge,” said *icipe*’s Dr Dan Masiga, Head of our Molecular Biology Unit.

The equipment required for this type of analysis is low cost—just a computer and an Internet connection—making this is a particularly promising area for African researchers to make a global contribution.

Read more about the workshop on the *icipe* website: <http://www.icipe.org/index.php/news/892-thrive-workshop.html>





## Caring for Africa's dryland environments

**H**ow can we support communities living in the driest parts of East and Southern Africa to cope with the effects of climate change?

Over four days in Addis Ababa, a workshop with 83 participants from more than 50 organisations focused on trends and challenges in Africa's drylands.

The team from the CHIESA Project, which is coordinated by *icipe* and supported by the Finland Ministry for Foreign Affairs, shared their work in Ethiopia, Kenya and Tanzania to help farmers adapt to the impact of climate and land cover changes on ecosystem services and food security.

The outcomes of the discussions were summarised in a short communiqué, 'Achieving Resilience in East and Southern African Drylands', produced by the CHIESA team with [CARE's Adaptation Learning Programme](#) and [CGIAR's Climate Change, Agriculture and Food Security Programme](#).

It conveys strong messages about the need to develop effective approaches to community-based adaptation and to secure resilient and productive livelihoods for communities living in the region's drylands, in the face of an uncertain and changing climate.

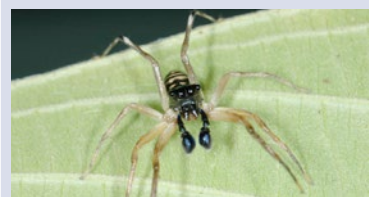
You can download the communiqué from the CARE Climate Change Information Centre: [http://www.careclimatechange.org/files/CBA\\_and\\_resilience\\_Communique\\_nov\\_14.pdf](http://www.careclimatechange.org/files/CBA_and_resilience_Communique_nov_14.pdf)

## icipe IN THE MEDIA



**New Scientist 'photo of the day': Bee talent-scouts seek out superstars in Africa**

<http://www.newscientist.com/article/dn26520-bee-talentscouts-look-out-superstars-in-africa.html#.VH28A6SUft4>



**National Geographic 'news watch': "Remarkable" Spider Eats Mostly Mosquitoes—Could It Fight Malaria?**

<http://newswatch.nationalgeographic.com/2014/10/07/mosquitoes-insects-jumping-spiders-malaysia-animals-science-predators-prey/>



**Business Daily Africa: *icipe* seeks to commercialise silk farming across Kenya**

[http://www.businessdailyafrica.com/Corporate-News/Icipe-seeks-to-commercialise-silk-farming/-/539550/2501280/-/93ffr7z/-/index.html?utm\\_medium=twitter&utm\\_source=twitterfeed](http://www.businessdailyafrica.com/Corporate-News/Icipe-seeks-to-commercialise-silk-farming/-/539550/2501280/-/93ffr7z/-/index.html?utm_medium=twitter&utm_source=twitterfeed)



**Kenya Broadcasting Corporation: Ruto launches Kshs 1.7 billion science programme**

<http://www.kbc.co.ke/ruto-launches-kshs-1-7-billion-science-programme/>



**Swiss Agency for Development and Cooperation: Insects, key actors of food security**

<https://www.eda.admin.ch/deza/en/home/aktuell/news-medienmitteilungenartikelundreden.html/deza/en/meta/news/2014/91/16/insekten>



**Finnish Ministry of Foreign Affairs: Information on climate change spreads in Eastern Africa's mountainous areas**

<http://formin.finland.fi/public/default.aspx?contentid=313934&nodeid=15145&contentlan=2&culture=en-US>





## RECENT PUBLICATIONS

It has been another successful year for *icipe* in terms of publications.

- In 2014 we have broken our own record for number of peer-reviewed papers published and several more are still in press.
- 121 papers have been published so far, with 39 per cent of these in open access journals.
- The journals with the highest impact factor that published *icipe*'s work were *Science*, *Molecular Biology and Evolution* and *Proceedings of the National Academy of Sciences (PNAS)*.

We'd like to congratulate the following scientists for their efforts in 2014.

| Top 5 most prolific scientists           | Top 5 most prolific visiting scientists | Authors of the top 5 papers published in the highest impact journals |
|--|---|--|
| 1. Daniel Masiga (16)                    | 1. Bruno Le Ru (13)                     | 1. Masiga D. and Fischer A.  |
| 2. Sunday Ekesi (13)                     | 2. Thibaud Martin (8)                   | 2. Fischer A.  |
| 3. Baldwyn Torto (11)                    | 3. Paul-Andre Calatayud (7)             | 3. Pasquet R.  |
| 4. Rosemary Sang (10)                    | 4. Robert Jackson (4)                   | 4. Sawa P. and Torto B./Nyasembe V.O.                                |
| 5. Zeyaur Khan / Charles Midega (8 each) | 5. *                                    | 5. Midega C.A.O. and Khan Z.R.                                       |

\* Four other visiting scientists published a total of three papers each

For a full list of publications in 2014, see: <http://www.icipe.org/index.php/all-publications/893-publications-of-2014.html>

Here are some recent highlights, with *icipe* authors highlighted in bold.

### Spiroacetals in the Colonization Behaviour of the Coffee Berry Borer: A 'Push-Pull' System

PLOS One, 7 November 2014

**Teresiah Nyambura Njihia, Juliana Jaramillo, Lucy Murungi, Dickson Mwenda, Benedict Orindi, Hans-Michael Poehling, Baldwyn Torto**

This study looked into how the organic compounds released by the coffee berry repel or attract coffee berry borer pests.

It found that, in addition to conophthorin, the coffee berry spiroacetals frontalin and brocain are also used as semiochemicals by the coffee berry borer for host colonization.

Their results suggest that frontalin acts as the 'push' (repellent) with conophthorin acting as the 'pull' (attractant), which means that frontalin could potentially be harnessed as a repellent to manage the coffee berry borer pest.

Read more at: <http://www.plosone.org/article/info%3Adoi%2F10.1371%2Fjournal.pone.0111316>

### Plant volatiles influence the African weaver ant-cashew tree mutualism

Journal of Chemical Ecology, 30 October 2014

**Caroline Wanjiku, Fathiya M. Khamis, Peter E. A. Teal, Baldwyn Torto**

This paper by Caroline Kungu (Wanjiku), an MSc student at Kenyatta University and DRIP scholar at *icipe*, revealed for the first time that perception of host plant odours led weaver ants to non-volatile sugar rewards.

More importantly, the preferred plant parts associated with weaver ant behaviour shared similarities in chemical composition, and a specific blend from these plant parts which attracted the cashew bug also attracted the weaver ant.

Her results present new and interesting possibilities for improving weaver ant performance in cashew pest management.

A photo from this paper was chosen as the cover of the most recent issue of the *Journal of Chemical Ecology*.

Read more at: <http://link.springer.com/article/10.1007/s10886-014-0512-3>

### Microclimate Modification and Insect Pest Exclusion Using Agronet Improve Pod Yield and Quality of French Bean

HortScience, 8 October, 2014

Elisha Otieno Gogo, Mwanarusi Saidi and Jacob Mugwa Ochieng, **Thibaud Martin**, Vance Baird and Mathieu Nguojajo

The French bean is one of Africa's leading export vegetable crops, but production is limited by pests and harsh environmental conditions. Many farmers repeatedly spray insecticides, but high pesticides residues see crops rejected by the export market.

This study trialed agricultural nets (agronets) to increase the yield of French beans by improving the microclimate around the crop and reducing pest infestation.

Read more at: <http://hortsci.ashspublications.org/content/49/10/1298.abstract>





## icipe's PEOPLE

### icipe Director General visits Stockholm, London



Dr Segenet Kelemu

In October, our Director General Segenet Kelemu visited Stockholm and London, one of a series of trips the DG has taken this year to meet *icipe*'s major partners around the world.

In London, she gave a presentation of *icipe*'s work to representatives from the UK Department for International Development (DFID).

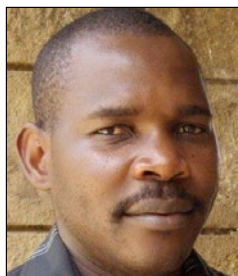
In Stockholm, she met officials from the Swedish International Development Cooperation (Sida), a long-time donor to *icipe*, and gave a presentation for the Director and staff of the International Foundation for

Science (IFS).

While in Sweden, she delivered a keynote address at a seminar jointly organised by the Stockholm Environment Institute (SEI), the Royal Swedish Academy of Agriculture and Forestry (KSLA) and the Swedish University of Agricultural Sciences (SLU) on the topic "Insects as a protein source within the global food system: Snapshot of the Eastern African value chain."

She also joined SEI for their 25<sup>th</sup> anniversary celebrations, where high-profile guests, including the King of Sweden, heard 'Stories from a World of Change'.

### Dr Charles Midega heading to Cornell on prestigious award



Dr Charles Midega

Dr Charles Midega has been appointed the Cornell University Distinguished Africanist Scholar in 2015, the first person to be awarded from East Africa.

Dr Midega will spend four weeks at the university in March next year. He will take part in the 'Issues in African Development' seminar series, speaking about how natural resources in Africa are an increasingly important driver of sustainable economic growth in the continent.

A public lecture is also scheduled on 'Agricultural Development in Africa: Challenges and Opportunities', aiming to show the audience of students, policy-makers and Cornell stakeholders what role the international community can play in supporting African agriculture.

He will also teach classes on exploiting biodiversity and strategic partnerships to boost agricultural productivity, and also develop a proposal for a joint research project.

### Dr Baldwin Torto joins the AAS Commission on Science Education



Dr Baldwin Torto

Dr Baldwin Torto has been selected to serve as a member of the African Academy of Sciences (AAS) Commission on Sciences Education.

This is one of four commissions established by the AAS to build capacity and set the agenda for science in Africa.

The others focus on women in science, Africa's science heritage and organising Pan-African Science Olympiads.

He has also been selected by the AAS to serve on the jury for the award of the Africa Union (AU) Prizes.

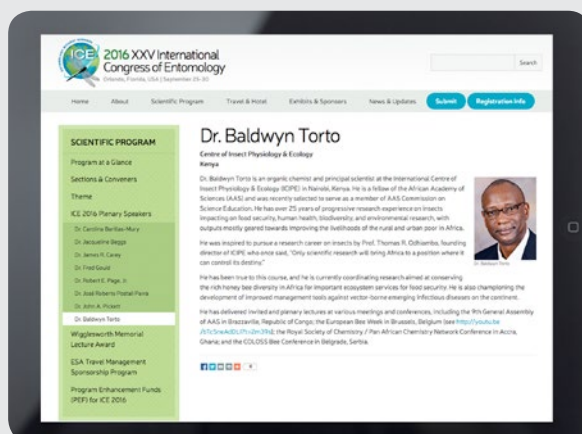
## Three in a row for *icipe* at the International Congress of Entomology

Dr Baldwin Torto, who leads our Behavioural and Chemical Ecology Department, has been selected as a plenary speaker at the 2016 XXV International Congress of Entomology.

This makes three in a row for *icipe*: At the 2008 conference, Prof Zeyaur Khan, who leads our push-pull programme, delivered a plenary, and in 2012, then-DG Christian Borgemeister addressed the congress.

*icipe* hopes to bring this quadrennial conference of entomologists to Kenya in 2020.

<http://ice2016orlando.org/scientific-program/plenary/dr-baldwyn-torto/>





## Student Prisca Oria wins poster award for malaria work

Prisca Oria, a student working in the SolarMal project, won a poster award at the recent Third Global Symposium on Health Systems Research in Cape Town, South Africa.

From a total pool of about 600 posters, hers was selected as the best on day two of the three-day conference.

Her winning poster, 'Weaving together the technical, social and ecological perspectives in an innovative malaria control project', was prominently displayed until the end of the conference.



Prisca Oria

## DG Segenet Kelemu celebrated in commemorative calendar

icipe's DG, Dr Segenet Kelemu, is featured in a 2015 calendar celebrating the 25<sup>th</sup> anniversary of the Organization for Women in Science for the Developing World (OWSD).

The calendar recognises some of the senior members of OWSD from eastern and southern Africa who have made an immense contribution to gender, science and technology.

## Congratulations to Vincent Nyasembe: winner of the prize for top student paper at *icipe*, 2014



Vincent Nyasembe

Each year, *icipe* awards prizes to its students who have published the most outstanding scientific papers.

This year's winner was Vincent Nyasembe, a PhD student in our malaria programme.

His paper, published in the high impact journal *Current Biology*, provides insights into the behavioural manipulation of the malaria vector

(*Anopheles gambiae*) by the malaria-causing parasite, *Plasmodium falciparum*, during the course of nectar feeding by this mosquito.

His award—a plaque, a certificate and cash prize of US\$500—was presented by Prof Bill Hansson, Chair of the Governing Council, during a dinner at our Mbita campus.

## Runner-up: Daniel Munyao Mutyambai, for his work on maize stemborers



Daniel M. Mutyambai

**Mutyambai, D. M., Midega, C. A.O., Bruce, T.J.A., van den Berg, J., Pickett, J. A. and Khan, Z. R.** (2014) Behaviour and biology of *Chilo partellus* on maize landraces. *Entomologia Experimentalis et Applicata*, 153: 170–181. doi: 10.1111/eea.12237.

## Runner-up: Alexander Mutua Mvea, for his work on thrips in onions



Alexander M. Mvea

**Muvea A.M., Meyhöfer R., Subramanian S., Poehling H.-M., Ekesi S., and Maniania N.K.** (2014) Colonization of onions by endophytic fungi and their impacts on the biology of *Thrips tabaci*. *PLoS ONE* 9(9): e108242. doi:10.1371/journal.pone.0108242.

Read more about each of these students' outstanding work at: <http://www.icipe.org/index.php/news/891-top-students-2014.html>







## Farewell and thank you to outgoing Governing Council members

At the recent meeting of the Governing Council, we took the opportunity to thank the two outgoing members for their service to *icipe*.

We wish both Prof. John Pickett and Prof. Janice Jiggins all the best, and we are sure that the many friendships and collaborations they have with *icipe* will continue.

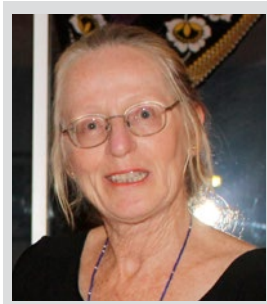
### Prof. John Pickett



Prof. John Pickett has been a member of the Governing Council since 2005, and served as Chair from 2007-2013.

Prof Pickett is a long-time friend of *icipe*. With *icipe*'s Prof Zeyaur Khan, he pioneered the innovative push-pull system to protect food crops from pests in an ecological, feasible way for smallholders, enabling them to move beyond subsistence farming to producing surpluses they can sell for income.

### Prof. Janice Jiggins



Prof. Janice Jiggins also leaves the board after five years of service to *icipe*.

As a social scientist, she brought to the board a great understanding of how we can evaluate and increase the impact of our science for communities and smallholder farmers.

Her advocacy for women has seen gender made a priority in each of our projects.

## Welcoming new staff to *icipe*

### Dr Christopher Prideaux – Director of Research & Partnerships



Dr Chris Prideaux joins *icipe* from CSIRO, Australia's national science agency, where he was Deputy Chief of their Division of Animal, Food and Health Sciences.

His primary responsibility was for the Division's science capability development, including line management of the Division's six programmes: Genomics and Cellular Sciences, Microbial Sciences, Emergency Diseases, Livestock Systems, Food Sciences, and Nutrition & Health Sciences.

He oversaw strategic investments to initiate and develop new areas of science, and was responsible for ensuring the quality of the Division's science was of an international standard.

From 2011, Dr Prideaux acted as an Advisor to the CSIRO-AusAID African Food Security Initiative, a \$30M Australian government activity to increase the food security of Africa through research and development combined with capacity building.

### Dr Robert Skilton – Head of Capacity Building and Institutional Development (CB&ID) Programme



As Head of CB&ID, Rob will work with African higher education and research partners—and with global partners—to implement effective and innovative capacity building and institutional development initiatives for research and technology acquisition and uptake in Africa.

Rob (a citizen of the UK), brings more than 25 years' experience in biosciences research, laboratory management and capacity building in the UK and in Kenya.

Most recently, Rob was Team Leader of the Capacity Building Programme at the Biosciences eastern and central Africa (BecA) Hub at the International Livestock Research Institute (ILRI) in Nairobi, overseeing a budget of US\$2.6 million to enhance the research capacity of scientists and graduate students from regional and national organisations to conduct bioscience research for agricultural development in the eastern and central Africa region.





## Timothy Njoroge Kingori – Facilities & Assets Manager



Timothy Njoroge Kingori joins *icipe* as Facilities and Assets Manager. He previously worked with Biosciences eastern and central Africa (BecA-ILRI Hub) as their Assistant Technology Manager (2010-2014).

Timothy has over 15 years of laboratory work experience especially in the field of molecular biology gained from practical engagement at the International Livestock Research Institute (ILRI) vaccine development programme (1996-2003). He has wide experience within the commercial sector and served as Operations Manager for a commercial diagnostic distribution company both in Nairobi and in Kampala, Uganda (2006-2009).

Timothy holds an MSc degree in Laboratory Techniques and Management in Livestock Development from the University of Reading, United Kingdom.

He has completed further training in biosecurity, and recently attended a workshop in research management supported by the Gates Foundation.

## Susan Kariuki – Procurement Manager



Susan Kariuki has been appointed as Procurement Manager effective 1st November 2014, responsible for the overall supervision of the acquisition of goods and services at *icipe*, ensuring safe and correct purchase handling processes that are efficient, cost-effective and in line with the Centre's policies and procedures for procurement.

Susan is not new to *icipe*: prior to taking up this position, she worked at *icipe* as Executive Assistant to the Director General from 2000-2007 and as Fundraising Coordinator from July 2007–October 2014.

She holds a Masters in Business Administration from the Eastern and Southern Africa Management Institute (ESAMI), Tanzania, a Bachelor of Business Administration and a National Diploma in Business Management from the Kenya Institute of Management, Nairobi, Kenya.

## Nelson Christopher Suchi – Clerk of Works



Nelson Christopher Suchi joins *icipe* as our new Clerk of Works, managing the construction of new buildings and the tender process. He has more than seven years experience in all aspects of building project management and construction supervision.

As Engineering Manager working with British Army Training Unit Kenya (BATUK), he was in charge of coordination and supervision of contracts, ensuring timely delivery of contracts to design, specifications, scope and within budget, liaising between military construction force(s), civilian contractors and Kenyan building regulatory bodies.

He has also undertaken the extensive training in workplace safety both in Kenya and the UK.

## Jackson Kimani – Research Assistant



Jackson Kimani joins *icipe* as the GIS Specialist in *icipe*'s Climate Change Impacts on Ecosystem Services and Food Security in Eastern Africa (CHIESA) project. He holds a BSc (Hons.) in Soil, Water and Environmental Engineering from Jomo Kenyatta University of Agriculture and Technology. He is also an associate Environmental Impact Assessment (EIA) expert registered with the National Environmental Management Authority (NEMA).

Before joining *icipe*, Jackson was a research assistant at Development Impact Consulting Limited, where he was involved in data collection and analysis for water projects funded by the Water Services Trust Fund (WSTF).

Kimani's responsibilities at *icipe* as the GIS specialist will be provision of technical support in GIS pertaining to map making, analysis of data, capacity development and maintenance of the GIS server. In addition, he will also be involved in hydrologic modelling and animal tracking using GPS gadgets and subsequent data acquisition and administration, among others.





## Girma Woldeselassie Hailu – Research Scientist



Girma Woldeselassie Hailu joins *icipe* as a research scientist based in Tororo, Uganda.

He holds a PhD and MSc in Natural Resource Management and Agroforestry from the Kenyatta University.

Prior to joining *icipe* Girma was an independent consultant to Farm Radio International, following a time as their Program Coordinator.

He will lead and oversee the implementation and large-scale scaling out of the conventional and climate-smart push-pull technology in Uganda.

## Leonard Mbulo – Gardener



Leonard Mbulo joins the ground staff as part of our team of gardeners, who are working to maintain the gorgeous new plants recently planted as part of our 'greening *icipe*' programme.

