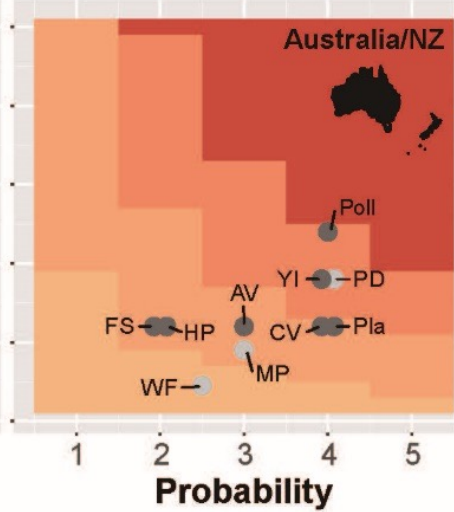
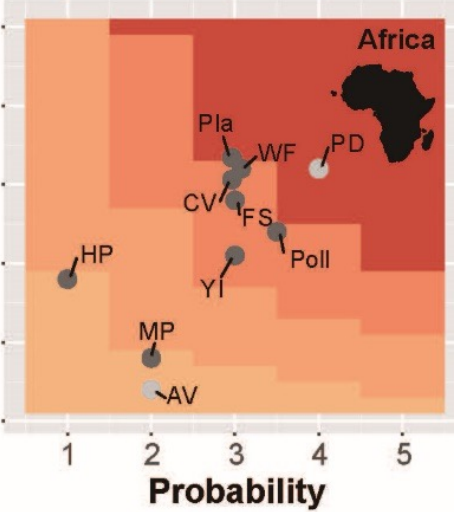
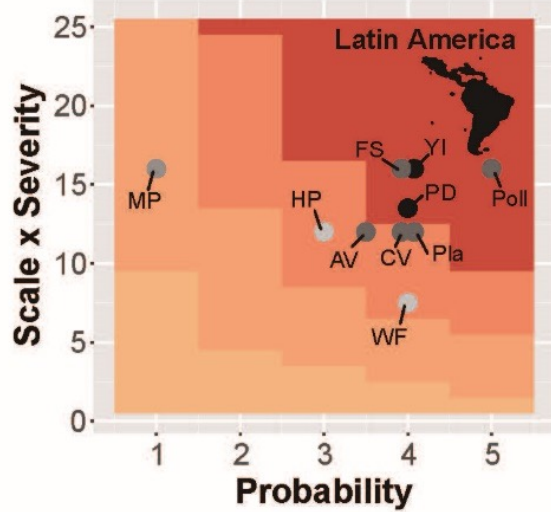
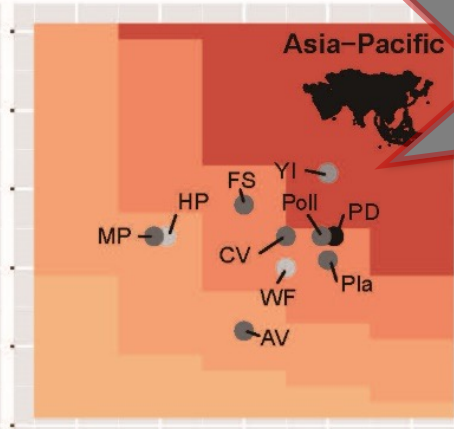
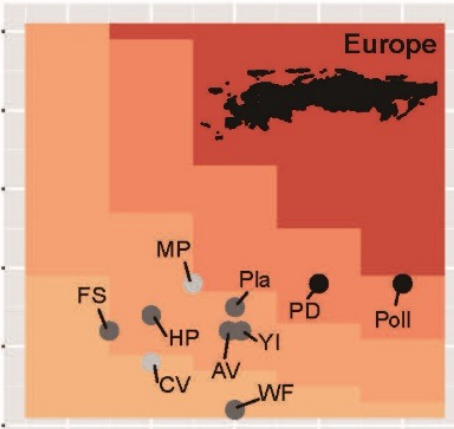
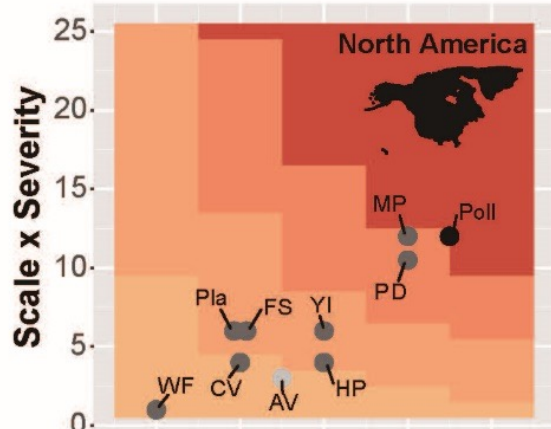
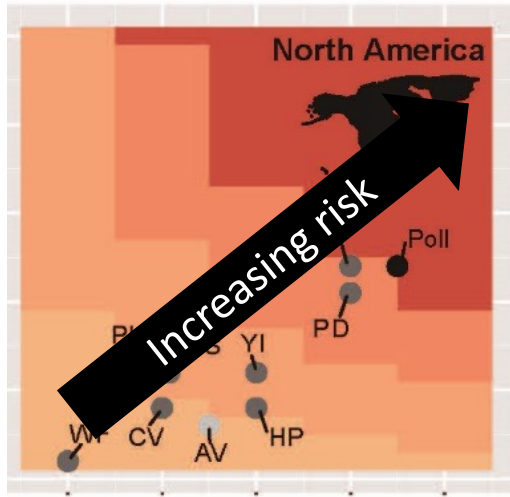


# How will pollinator decline actually affect human well-being?

A group of experts assessed **risks** from pollinator decline in different global regions



## Confidence

- Well established
- Established but incomplete
- Unresolved
- Inconclusive

- PD** Pollination Deficits
- YI** Yield Instability
- HP** Honey Production
- FS** Food System Resilience
- WF** Wild Fruit Availability
- Pla** Wild Plant Diversity
- Poll** Wild Pollinator Diversity
- MP** Managed Pollinators
- AV** Aesthetic Values
- CV** Cultural Values

Risks are **higher** in the "Global South"

