

See discussions, stats, and author profiles for this publication at: <https://www.researchgate.net/publication/345993808>

A cross-sectional observational study investigating the association between sedges (swamp grasses, Cyperaceae) and the prevalence of immature malaria vectors in aquatic habitats al...

Article in *F1000 Research* · October 2020

DOI: 10.12688/f1000research.25673.2

CITATIONS

0

READS

31

5 authors, including:



Getachew Bokore

Ethiopian Public Health Institute

1 PUBLICATION 0 CITATIONS

SEE PROFILE



Patrick Ogola Onyango

Maseno University

40 PUBLICATIONS 542 CITATIONS

SEE PROFILE



Syeda Tullu Bukhari

icipe – International Centre of Insect Physiology and Ecology

16 PUBLICATIONS 368 CITATIONS

SEE PROFILE



Ulrike Fillinger

icipe – International Centre of Insect Physiology and Ecology

111 PUBLICATIONS 4,049 CITATIONS

SEE PROFILE

Some of the authors of this publication are also working on these related projects:



Ecology and mosquito larvae [View project](#)



collection of VOCs from grasses [View project](#)



RESEARCH ARTICLE

REVISED A cross-sectional observational study investigating the association between sedges (swamp grasses, Cyperaceae) and the prevalence of immature malaria vectors in aquatic habitats along the shore of Lake Victoria, western Kenya [version 2; peer review: 2 approved]

Getachew E. Bokore ¹⁻³, Paul Ouma¹, Patrick O. Onyango², Tullu Bukhari^{1,2}, Ulrike Fillinger¹

¹International Centre of Insect Physiology and Ecology (icipe), P.O. Box 30772-00100, Nairobi, Kenya

²School of Physical and Biological Sciences, Department of Zoology, Maseno University, P.O. Box 333 – 40105, Maseno, Kenya

³Public Health Entomology Team, Ethiopian Public Health Institute, P.O. Box 1242, Addis Ababa, Ethiopia

V2 First published: 24 Aug 2020, 9:1032
<https://doi.org/10.12688/f1000research.25673.1>
 Latest published: 01 Oct 2020, 9:1032
<https://doi.org/10.12688/f1000research.25673.2>

Abstract

Background: Strategies that involve manipulations of the odour-orientation of gravid malaria vectors could lead to novel attract-and-kill interventions. Recent work has highlighted the potential involvement of graminoid plants in luring vectors to oviposition sites. This study aimed to analyse the association between water-indicating graminoid plants (Cyperaceae, sedges), other abiotic and biotic factors and the presence and abundance of early instar *Anopheles* larvae in aquatic habitats as a proxy indicator for oviposition.

Methods: A cross-sectional survey of 110 aquatic habitats along the shores of Lake Victoria was done during the rainy season. Habitats were sampled for mosquito larvae using the sweep-net method and habitat characteristics recorded.

Results: *Anopheles arabiensis* was the dominant species identified from aquatic habitats. Larvae of the secondary malaria vectors such as *Anopheles coustani*, *An. rufipes* and *An. maculipalpis* were found only in habitats covered with graminoids, whereas *An. arabiensis*, *An. ziemanni* and *An. pharoensis* were found in both habitats with and without graminoid plants. The hypothesis that sedges might be positively associated with the presence and abundance of early instar *Anopheles* larvae could not be confirmed. The dominant graminoid plants in the habitats were *Panicum repens*, *Cynodon dactylon* in the Poaceae family and *Cyperus rotundus* in the Cyperaceae family. All of these habitats supported abundant immature vector populations. The presence of early instar larvae was significantly and positively associated with swamp habitat types (OR=22, 95% CI=6-86, P<0.001) and abundance of

Open Peer Review

Reviewer Status

	Invited Reviewers	
	1	2
version 2 (revision) 01 Oct 2020		 report
version 1 24 Aug 2020	 report	 report

1. **Sisay Dugassa** , Addis Ababa University, Addis Ababa, Ethiopia

2. **Eric Ochomo** , Kenya Medical Research Institute (KEMRI), Kisumu, Kenya

Any reports and responses or comments on the article can be found at the end of the article.

late *Anopheles* larvae (OR=359, CI=33-3941, P<0.001), and negatively associated with the presence of tadpoles (OR=0.1, CI=0.001-0.5, P=0.008).

Conclusions: Early instar malaria vectors were abundant in habitats densely vegetated with graminoid plants in the study area but no specific preference could be detected for any species or family. In search for oviposition cues, it might be useful to screen for chemical volatiles released from all dominant plant species.

Keywords

Anopheles, oviposition, larval ecology, malaria, vector control, vegetation, graminoid plants

Corresponding author: Getachew E. Bokore ([egetachew@icipe.org](mailto: egetachew@icipe.org))

Author roles: **Bokore GE:** Conceptualization, Data Curation, Formal Analysis, Investigation, Methodology, Software, Validation, Visualization, Writing – Original Draft Preparation; **Ouma P:** Data Curation, Investigation, Resources, Writing – Review & Editing; **Onyango PO:** Supervision, Writing – Review & Editing; **Bukhari T:** Supervision, Writing – Review & Editing; **Fillinger U:** Conceptualization, Formal Analysis, Funding Acquisition, Methodology, Project Administration, Resources, Supervision, Validation, Writing – Review & Editing

Competing interests: No competing interests were disclosed.

Grant information: This work was primarily funded by International Insect Physiology and Ecology (icipe), Kenya with support from the following organizations and agencies: the Swedish Research Council (grant number- VR 2015-03159); UK's Department for International Development (DFID); Swedish International Development Cooperation Agency (Sida); the Swiss Agency for Development and Cooperation (SDC); Federal Democratic Republic of Ethiopia; and the Kenyan Government. GB was supported by a German Academic Exchange Service (DAAD) In-Region Postgraduate Scholarship. The views expressed herein do not necessarily reflect the official opinion of the donors.

The funders had no role in study design, data collection and analysis, decision to publish, or preparation of the manuscript.

Copyright: © 2020 Bokore GE *et al.* This is an open access article distributed under the terms of the [Creative Commons Attribution License](https://creativecommons.org/licenses/by/4.0/), which permits unrestricted use, distribution, and reproduction in any medium, provided the original work is properly cited.

How to cite this article: Bokore GE, Ouma P, Onyango PO *et al.* **A cross-sectional observational study investigating the association between sedges (swamp grasses, Cyperaceae) and the prevalence of immature malaria vectors in aquatic habitats along the shore of Lake Victoria, western Kenya [version 2; peer review: 2 approved]** F1000Research 2020, 9:1032 <https://doi.org/10.12688/f1000research.25673.2>

First published: 24 Aug 2020, 9:1032 <https://doi.org/10.12688/f1000research.25673.1>

REVISED Amendments from Version 1

The article has been revised in response to the reviewer's comments, specifically by:

Clarifying the method we used for measuring perimeter.

Clarifying the reason why we measured water turbidity, pH and temperature alone.

Correcting grammatical errors.

Including some gravid mosquito attractants previously identified in plants.

Justifying why we visually determined the vegetation cover of aquatic habitats.

Any further responses from the reviewers can be found at the end of the article

Background

Malaria, despite increased control efforts, is still among the leading human diseases in Africa. In 2018, 213 million people were infected and 380,000 died¹. The majority of people in sub-Saharan Africa live in poverty and in areas with suitable conditions for the proliferation of malaria vectors². The major malaria vectors are in the *Anopheles gambiae* and *An. funestus* species complexes, but a number of less efficient, so-called secondary vectors also contribute to malaria transmission^{3,4}.

With growing physiological and behavioural resistance of malaria vectors to insecticides⁵⁻⁷, research efforts are geared towards additional, non-insecticidal vector control strategies^{8,9}. Manipulations of the odour-orientation of adult vectors could lead to novel attract-and-kill interventions¹⁰⁻¹². The gravid female searching for a suitable oviposition site is a desirable target for control. This strategy is specifically important as a single gravid mosquito may lay between 50 to 150 eggs¹³, hence killing a single gravid mosquito affects the growth of the population. Understanding the cues for habitat selection is of paramount importance for the development of such a tool. Recent work has highlighted the potential involvement of graminoid plants in luring vectors to oviposition sites¹⁴. It has, for example, been shown that *Anopheles* mosquitoes respond to volatile chemical compounds that emanate from rice plants¹⁵.

Malaria vector mosquitoes lay their eggs in standing water and grass-like (graminoid) plants that often dominate wetlands associated with high *Anopheles* larval densities¹⁶⁻¹⁸. Some graminoid plants, similar to lowland rice (*Oryza sativa*), are well adapted to wetlands. Most species in the sedge family, also known as swamp grasses, (Cyperaceae) are wetland indicators. One sedge species, *Cyperus rotundus*, was recently associated with the discovery of the oviposition attractant cedrol¹⁹ but its connection to the sesquiterpene compound was not clearly understood.

We considered it plausible to hypothesize that there might be an association between chemical cues released by water-indicating plants that are used by gravid malaria vectors in search of

suitable oviposition sites. Therefore, we implemented this study driven by the hypothesis that sedges (Cyperaceae) are associated with the presence and abundance of early instar *Anopheles* larvae, as a proxy indicator for oviposition, in western Kenya.

Swamp habitats are very common along lakeshores and serve as permanent or semi-permanent breeding sites for malaria vectors²⁰. Studies support that the abundance of *Anopheles* larvae are associated with habitats surrounded by grass-like plants¹⁴. In the current study, we investigated: (1) the distribution of graminoid plants associated with aquatic habitats along the shores of Lake Victoria in western Kenya, (2) the association of the graminoid plants with the occurrence and abundance of *Anopheles* larvae, and (3) the association of abiotic and biotic factors in aquatic habitats with the occurrence and abundance of *Anopheles* larvae.

Methods

Study area

This study was conducted on Rusinga Island (0°21' and 0°26' south, 34°13' and 34°07' east) along the shore of Lake Victoria in Homa Bay County, western Kenya²¹ (Figure 1). The area is endemic for malaria and the estimated prevalence of malaria in the population of Rusinga Island is around 10%^{18,22,23}. Rusinga Island is only around 100 metres away from the mainland and connected via a bridge. The island has an area of 44 km² with altitude ranging from 1100 m to 1300 m above sea level and a population size of about 25,000²⁴. The daily average temperatures of Rusinga Island range from 16°C to 34°C and peak in dry seasons²⁴. The area experiences bimodal rainy seasons with long rains from March to June and short rains from November to December. Malaria transmission peaks following the end of the long rainy season in June/July²⁵. The field survey was implemented between May and June 2018, towards the end of the long rainy season.

Habitat surveys were done along stretches of 700 m long and 300 m wide (clusters of approx. 0.2 km²). A total of 13 sampling clusters were selected around the lake shores of Rusinga Island (Figure 1B). The areas were selected with the help of Google Earth, aiming at a homogeneous distribution around the island. Inaccessible areas with steep rocks at the shoreline were excluded. Within each sampling cluster all aquatic habitats' locations were recorded using a smartphone, a unique identifier allocated and sampled as outlined below.

Aquatic habitat surveys

The aquatic habitat types were categorized as either swamp, puddle, fishpond, drainage/trench or artificial pit. The perimeter of every habitat was estimated, always by the same field worker for uniformity, by walking in large steps around the habitat. Water turbidity was measured using a turbidity meter (TRB 355IR, WTW Germany) and water pH and temperature were measured using a portable multi-parameter probe (Multi, WTW Germany). These parameters have been shown to be associated with larvae based on previous work done in the same study area.

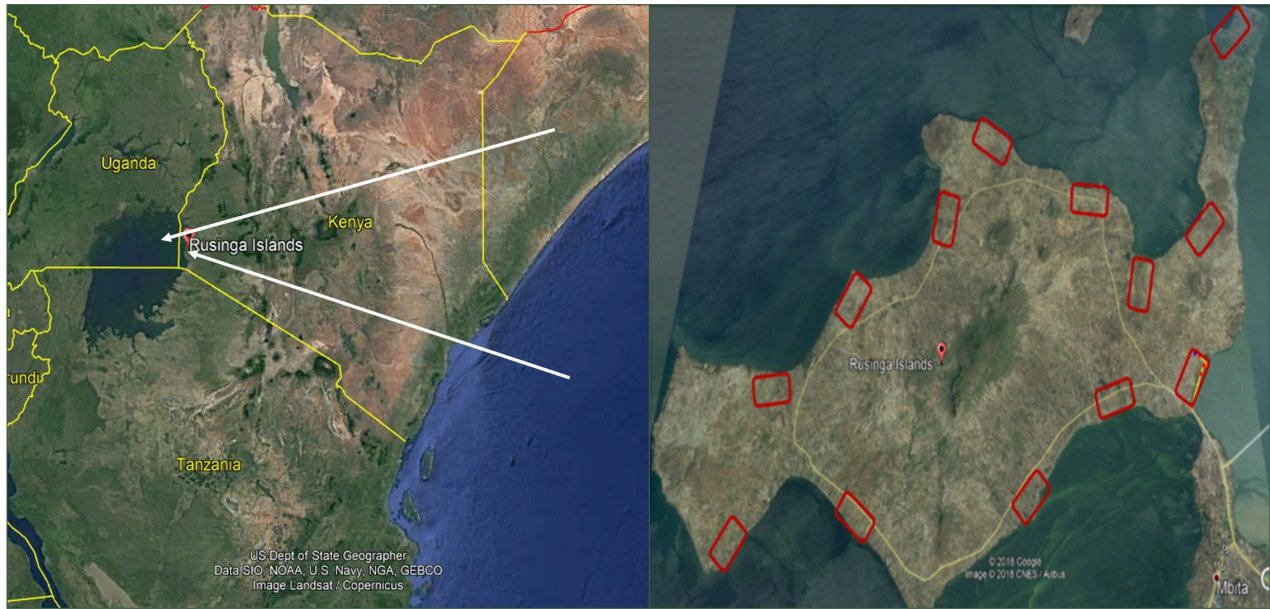


Figure 1. Map showing (A) Lake Victoria region, East Africa (B) the study clusters (rectangles in red) along the shores of Lake Victoria on Rusinga Island (Source: Google Earth).

Every aquatic habitat was inspected for the presence of larvae using the sweep-net method as described by Ndenga and others²⁷. The sweep-net (40 cm × 15 cm × 30 cm) was made from fine cotton cloth with a 150 cm long handle. It was chosen for sampling due to its better efficiency in sampling the diverse aquatic fauna including freshly hatched mosquito larvae and mosquito pupae than the standard dipper^{27,28}. A dipper was used for sampling when the habitat was too small to be sampled by a sweep-net. Sampling of mosquito larvae using either sampling tools was randomly done at different points of the habitats since different species of malaria vectors prefer different conditions and vegetations. The duration of sweeping was dependent on the perimeter of the habitat. About 10 minutes were taken to sweep habitats with perimeters exceeding 10 metres, while 5 minutes were taken to sweep habitats <10 m in perimeter. All sweeps were emptied into white trays and mosquito immature stages were counted separately for the two encountered genera, *Anopheles* and *Culex*. *Culex* and *Anopheles* larvae were identified morphologically. *Culex* larvae possess a siphon on the posterior part of their abdomen for breathing whereas *Anopheles* larvae have no siphon and rest horizontal to the water body²⁹. The larvae were grouped as early (1st and 2nd instar) and late (3rd and 4th instar) instars based on their body size. In addition, macroinvertebrates sampled from a habitat were grouped as Odonata (dragonfly and damselfly larvae), Coleoptera (water beetle larvae and adults), Heteroptera (Notonectidae, Naucoridae and Nepidae), fish and tadpoles. All late instar *Anopheles* larvae and mosquito pupae were transferred to water bottles (1 L) containing habitat water and taken to the International Centre of Insect Physiology and Ecology-Thomas Odhiambo Campus (*icipe*-TOC) for rearing to adults. Rearing of the field collected larvae was done in 1 L plastic containers. Larvae were fed with a pinch of ground dry cat food (Nestlé Purina Pet-

Care Company, Nairobi, Kenya) once daily. The emerged adults were killed in a -20°C refrigerator, sorted by genera and all *Anopheles* adults stored in Eppendorf tubes (1.5 ml) at -71°C until they were identified morphologically using printed keys³⁰ and molecularly using polymerase chain reaction (PCR) followed by gel-electrophoresis³¹. Randomly selected mosquito samples were used for molecular identification. Polymerase chain reaction was implemented for the amplification of the ribosomal internal transcribed spacer (ITS2) gene using primers³². Positive controls of *An. gambiae* s.s. and *An. arabiensis* (from the insectary) were analyzed with the samples from the field. Extraction of DNA was done for each mosquito separately using Tissue Kit (Quagen, GmbH Hilden, Germany). The PCR was prepared by mixing PCR mix of 2 µl of 5XHot Firepol Blended Master Mix (Ready to Load), primers (0.5 µM each), DNA template (2 µl) and nuclease-free water (5 µl). The thermal recycling conditions involved initial denaturation for 5 min at 95°C, after which 30 cycles of denaturation followed for 30 s at 94°C, annealing for 30 s at 50°C, extension for 30 s at 72°C and final extension for 5 min at 72°C. We used a Kyrtec Thermal Cycler (SC300T-R2, Australia) for the thermal reactions. Agarose gel-electrophoresis (2.0%) stained with 2 µl ethidium bromide against a 100 bp DNA ladder (Bioline, A Maridian Life Science® Company, UK) and a positive control was conducted to identify the species.

Vegetation coverage, vegetation types and the dominant vegetation type were recorded separately for habitat edge and water surface. Habitat edge was defined as the area along the waterline, approximately 10 cm inside and/or outside the water. Vegetation coverage was estimated visually, always by the same field worker, as the proportion of the habitats covered with vegetations and categorized as (1) 1–25%

(2) 25–50% (3) 50–75% (4) 75–100%. Graminoid plants across the edge and inside water were recorded as Poaceae, Cyperaceae, Juncaceae, Typhaceae. The graminoid plants were identified to family using the morphology of their leaves (two or three-ranked; open or closed sheaths), and their stem type (three-sided or round; hollow or solid) using Revuelta³³. Furthermore, herbaceous (not woody and non-graminoid plants) were collectively recorded as forbs. The presence of water plants and algae in the aquatic habitats was also recorded. The percent coverage of water plants and algae on the water surface was visually determined as above. For each habitat, the dominant type of vegetation was identified and recorded. Full specimens of all dominant graminoid plants found in the aquatic habitats were collected and planted at *icipe*-TOC for further identification^{34,35}.

Data analysis

Generalised estimating equations (GEE) with Poisson distribution fitted to a log function and exchangeable correlation matrix were used to test for associations between biological and environmental factors and the abundance of early instar *Anopheles* larvae. The cluster ID in which habitats were located was included in the model as repeated measurement. A GEE model was also used to analyse associations between factors and the presence of early instar *Anopheles* larvae. Here we included the presence of early instar *Anopheles* larvae as dependent variable in the model with binomial distribution fitted to a logit function and exchangeable correlation matrix to analyse its association with biotic and abiotic factors of the habitats (independent variables). The presence and abundance of early instar *Anopheles* larvae (rather than eggs which are difficult to identify from field samples) were used as dependent variable as a proxy for oviposition. This is based on recent work confirming that early instar density correlates with the abundance of females selecting a habitat for oviposition³⁶. The statistical outputs were reported as incidence rate ratios (RR) for the abundance of the first instar larvae and odds ratios (OR) for the presence with their 95% confidence intervals (95% CI). R statistical software version 3.5.1³⁷ was used for the analyses.

Ethics statement

This field survey was largely descriptive and observational and had no human study participants. Habitat surveys on privately owned lands were made after seeking consent from the landowners and were implemented in their presence.

Results

Aquatic habitat types

A total of 110 aquatic habitats were identified during the survey³⁸. As expected, given the targeted areas within 300 metres of the lake shore, the most prevalent aquatic habitat types were swamps (65.5%, n=72) defined as permanent or semi-permanent water-logged sections of land with tall graminoid vegetation and/or floating plants (Figure 2A). The water sources of these were largely groundwater supplemented by rainwater. Other habitats (see Figure 2B, Figure 3C, 3D and 3E) included ponds formerly used for breeding fish but abandoned at the survey time (11%, n=12), rainfed puddles (9%, n=10), drainages (9%, n=10) and artificial pits (5.5%, n=6). Given that all non-swamp

habitats were few in number, they were pooled for statistical analysis and the swamp habitats used as the reference group (Figure 3). Early instar *Anopheles* larvae were found frequently during the survey in the habitat types: artificial pits (n=6, 100%), drainages (n=9, 90%), ponds (n=5, 42%), puddles (n=7, 70%) and swamps (n=61, 85%). The majority of these habitat types were characterized by possessing graminoid plants: graminoid plants dominated the vegetation in 100% of the swamps, in 83% of the ponds, in 80% of the puddles, in 70% of the drainages, and in 50% of the artificial pits.

Association between graminoid plants and the presence and abundance of *Anopheles* larvae

All the swamp habitats were bordered by graminoid plants along the water edges and had a high surface coverage. Similarly, 84% (32/38) of non-swamp habitats had graminoids along their edges and 76% (29/38) had graminoids at their surfaces. Unexpectedly, swamp grasses were not the most frequently found graminoid plants in the survey. Representatives of the Cyperaceae family were found only in 39% of the aquatic habitats sampled. Among the Poaceae family, torpedo grass (*Panicum repens*) and Bermuda grass (*Cynodon dactylon*) were the dominant species (Figure 4).

Of the surveyed habitats, 42 (38%) were found covered by *P. repens* along their edges and 47 (43%) of the habitats at their surfaces. *Cynodon dactylon* was found covering the habitats both along the edges in 35 (32%) habitats and surfaces in 25 (23%) habitats (Table 1). Overall, graminoid plants dominated in 96 habitats whilst forbs dominated only in five habitats during the survey. Nine habitats had no vegetations at their surface and five of them were colonized by early instar *Anopheles* larvae. We found water plants in 26 (24%) out of the 110 habitats and most (n=20, 77%) of them in swamp habitats. Filamentous algae were recorded in 21 habitats. Contrary to our hypothesis, there was no significant association between the presence or abundance of early instar *Anopheles* larvae and the dominant graminoid plant present in a habitat (Table 1).

Anopheles species composition

A total of 14,145 early and late instar *Anopheles* larvae and 402 pupae were collected. Out of those, 4,650 emerged into adults and were morphologically identified (Table 2). *Anopheles gambiae s.l.* represented 96% of all *Anopheles* specimen collected. Molecular identification was done for a random sample of 10% of the *An. gambiae s.l.* (n=480) and revealed 100% *An. arabiensis*.

Anopheles coustani, *An. rufipes* and *An. maculipalpis* were found only in aquatic habitats covered with graminoid plants, whereas *An. arabiensis*, *An. ziemanni* and *An. pharoensis* were found in both habitats with and without graminoid plants. All six species of *Anopheles* mosquitoes were recorded in swamp habitats. All of these *Anopheles* species were found in aquatic habitats with dense graminoid vegetation (50–100%) (Table 3). However, only three species of *Anopheles* mosquitoes (*An. arabiensis*, *An. ziemanni*, and *An. pharoensis*) were collected in habitats sparsely (1–25%) covered by graminoid plants.

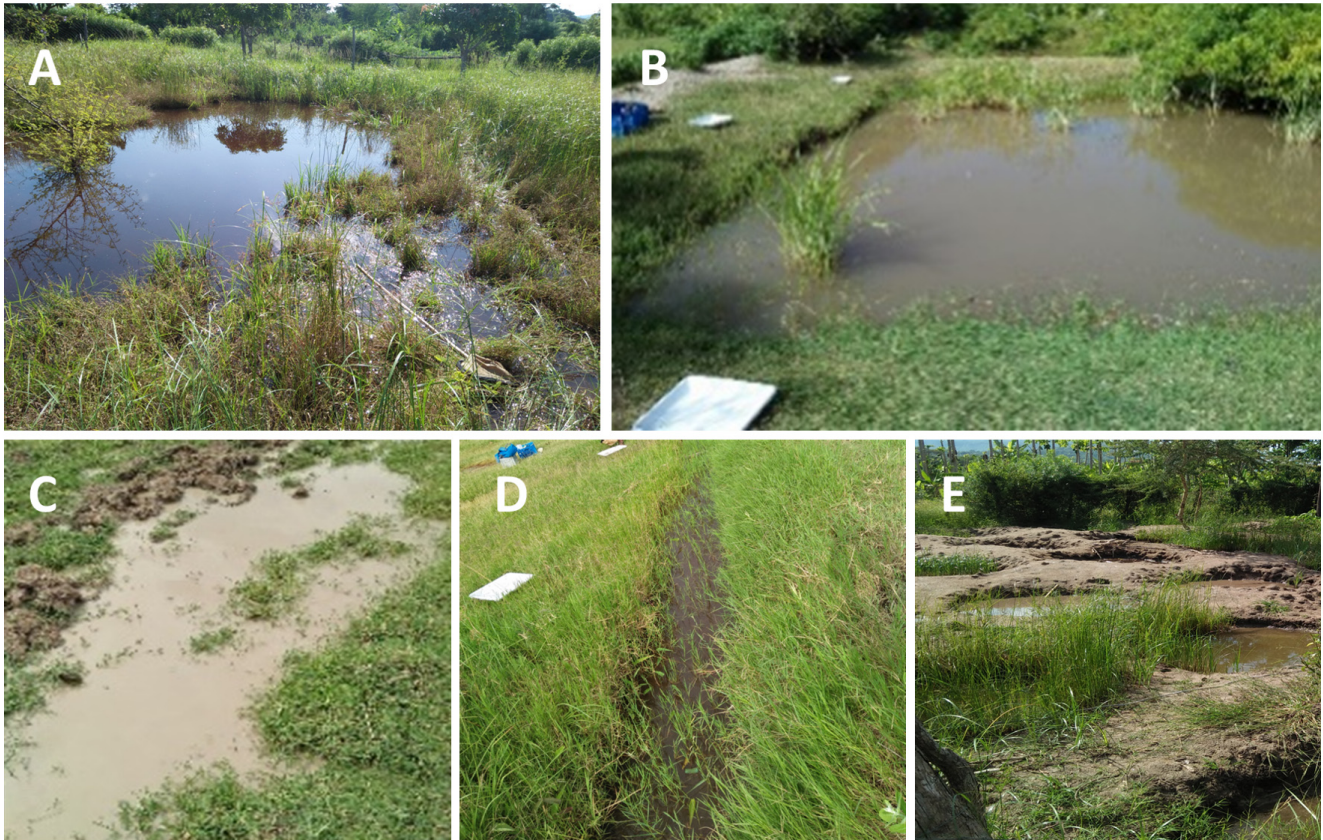


Figure 2. Examples of habitat types. (A) Swamp, (B) Fishpond, (C) Puddle, (D) Drainage, (E) Artificial pit.

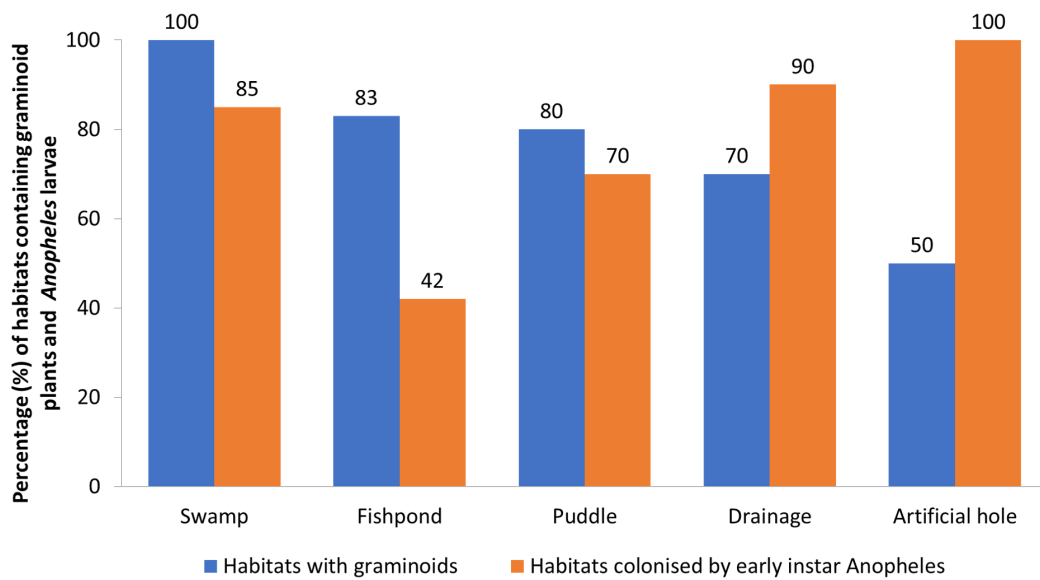


Figure 3. Bar graph showing percentage of habitats containing graminoid plants and being colonised by early instar *Anopheles* larvae.

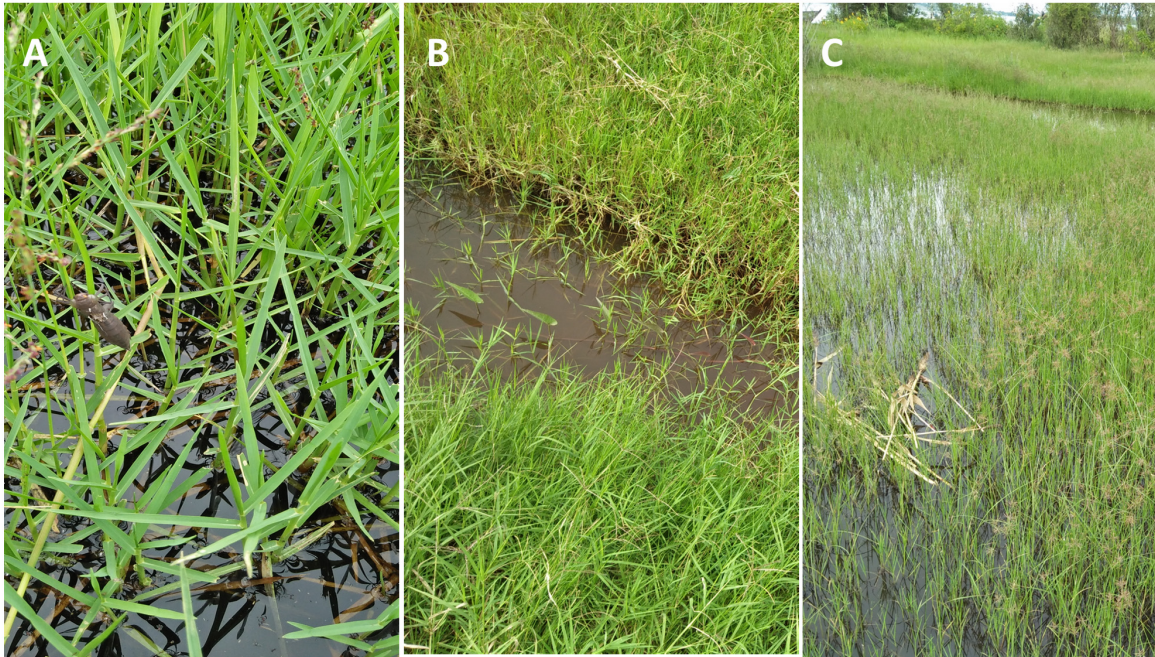


Figure 4. The most dominant graminoid plants identified during the survey. (A) *Panicum repens* (Poaceae), (B) *Cynodon dactylon* (Poaceae) and (C) *Cyperus rotundus* (Cyperaceae).

Table 1. Association between dominant graminoid plants, and the presence and abundance of *Anopheles* early instar larvae.

Factor	No. habitats	Mean (95% CI) of <i>Anopheles</i> early instar larvae	Presence of <i>Anopheles</i> early instar larvae		Abundance of <i>Anopheles</i> early instar larvae	
			OR (95% CI)	P value	RR (95% CI)	P value
<i>Cyperus rotundus</i> (Cyperaceae)*	14	57 (22.19-149)	1		1	
<i>Cynodon dactylon</i> (Poaceae)	25	99 (48-205)	1.1 (0.7-1.7)	0.762	1.7 (0.6-5.5)	0.35
<i>Panicum repens</i> (Poaceae)	47	84 (48-146)	1.2 (0.9-1.7)	0.305	1.5 (0.5-4.2)	0.99
Others (Poaceae)	10	58 (33-101)	1.4 (0.99-2)	0.057	1.01 (0.3-3)	0.48

*Selected as reference based on initial hypothesis and earlier association of *Cyperus rotundus* with oviposition. OR= odds ratio, RR= rate ratio, CI= confidence interval.

Table 2. Species composition of *Anopheles* collected from habitats along the lake shore of Rusinga Island.

<i>Anopheles</i> spp	Number of mosquitoes	Percent composition
<i>An. Arabiensis</i> *	4481	96.24
<i>An. coustani</i>	22	0.47
<i>An. maculipalpis</i>	2	0.04
<i>An. pharoensis</i>	67	1.44
<i>An. rufipes</i>	27	0.58
<i>An. ziemanni</i>	57	1.22

* Molecular identification of a random sample of 10% of the *An. gambiae* s.l. revealed 100% *An. arabiensis*.

Aquatic habitats populated with *Panicum repens* and forbs at their edges had all the six *Anopheles* species identified (Table 4a). *Megaloptachne albescens* was found dominant in six out of 110 habitats surveyed but was found to have all the six different species of *Anopheles* (Table 4b). *Anopheles arabiensis*, *An. coustani*, and *An. pharoensis* were coexisting with all the graminoid types and forbs found dominating along the surfaces of the habitats.

Association between aquatic habitat biotic and abiotic factors and *Anopheles* larvae presence and abundance

The presence of early instar *Anopheles* larvae in habitats was significantly and positively associated with swamp-type habitats (OR=22, 95%CI=6-86, P<0.001), presence of late instar *Anopheles* larvae (OR=359, CI=33-3941, P<0.001), and presence of *Culex* larvae (OR=17, 95%CI=3-107, P=0.002) (Table 5). In habitats containing pupae the odds of finding early instar

Table 3. Mean number ± 95% CI of different mosquito species in swamp and non-swamp habitats, habitats with and without Cyperaceae and graminoids coverage levels.

Factor	Variable	Mean (95% CI) of <i>Anopheles</i> mosquitoes identified from adults emerged from collected immature stages					
		<i>An. gambiae</i>	<i>An. ziemanni</i>	<i>An. coustani</i>	<i>An. pharoensis</i>	<i>An. maculipalpis</i>	<i>An. rufipes</i>
Habitat type	Non-swamp	30 (17-46)	0.3 (0.1-0.9)	0.3 (0.1-0.8)	0.4 (0.2-0.9)	0	0.5 (0.1-5)
	Swamp	45 (29-69)	0.6 (0.3-1.4)	0.1 (0.1-0.3)	0.7 (0.4-1.4)	0.03 (0-0.1)	0.1 (0-0.6)
Graminoids	No-Cyperaceae	41 (26-65)	0.5 (0.2-1.1)	0.2 (0.1-0.5)	0.4 (0.2-0.9)	0.03 (0-0.1)	0.4 (0.1-2)
	Cyperaceae	38 (22-66)	0.6 (0.2-1.8)	0.1 (0.1-0.4)	0.9 (0.4-1.9)	0	0.02 (0-0.4)
Graminoids coverage (%)	1-25%	48 (20-116)	0.1 (0.1-0.7)	0	0.13 (0.1-0.7)	0	0
	25-50%	69 (22-212)	0.2 (0-2)	0.7 (0.2-3)	0.7 (0.14-3.4)	0	0.10 (0-10)
	50-75%	46 (19-112)	0.1 (0.0-0.7)	0.1 (0-0.7)	0.2 (0.04-0.9)	0.1 (0-0.5)	0.3 (0-8)
	75-100%	31 (20-50)	0.9 (0.4-1.9)	0.2 (0.1-0.5)	0.9 (0.5-1.7)	0.02 (0-0.1)	0.4 (0.1-2)

CI= confidence interval.

Table 4. Dominant vegetations (a) at the edges and (b) at the surfaces and mean number of *Anopheles* mosquitoes.

(a)

Dominant vegetation at habitat edge	No. of habitats	Mean (95% CI)					
		<i>An. arabiensis</i>	<i>An. ziemanni</i>	<i>An. coustani</i>	<i>An. pharoensis</i>	<i>An. maculipalpis</i>	<i>An. rufipes</i>
<i>Cyperus rotundus</i>	12	38 (14-108)	0.25 (0.03-2)	0.2 (0.03-1)	0.42 (0.1-2)	0	0
<i>Cynodon dactylon</i>	35	32 (18-59)	0.4 (0.1-1)	0.3 (0.1-1)	0.8 (0.3-2)	0	0.1 (0.01-1)
<i>Panicum repens</i>	42	44 (25-76)	0.9 (0.4-2)	0.1 (0-0.4)	0.8 (0.4-2)	0.02 (0-0.2)	0.02 (0-0.3)
Forbs	11	26 (9-77)	0.1 (0.01-1)	0.2 (0.03-1)	0.1 (0.01-1)	0.1 (0.01-0.7)	0.4 (0.02-6)
Others	7	76 (20-293)	0.1 (0.01-2)	0.1 (0.01-2)	0.3 (0.03-2)	0	3 (0.01-66)

(b)

Dominant vegetation covering habitat surface	No. of habitats	Mean (95% CI)					
		<i>An. arabiensis*</i>	<i>An. ziemanni</i>	<i>An. coustani</i>	<i>An. pharoensis</i>	<i>An. maculipalpis</i>	<i>An. rufipes</i>
<i>Cyperus rotundus</i>	14	45 (18-117)	0.1 (0.02-1)	0.1 (0.03-1)	1 (0.2-4)	0	0
<i>Cynodon dactylon</i>	25	25 (13-52)	0.2 (0.04-1)	0.1 (0-0.5)	0.4 (0.1-1.4)	0	0
<i>Panicum repens</i>	47	40 (24-67)	1 (0.4-2)	0.2 (0.1-0.4)	1 (0.3-2)	0.02 (0-0.2)	0.1 (0-0.3)
Forbs	5	28 (6-137)	0	0.4 (0.1-4)	0.2 (0.01-4)	0	0
Others	10	74 (24-227)	0.5 (0.1-4)	1 (0.2-3)	0.6 (0.1-3)	0.01 (0-0.2)	2 (0.3-0.3)

CI= confidence interval.

Table 5. Output of multivariate analysis of the presence or abundance of early instar *Anopheles* larvae as outcome, and biotic and abiotic factors as explanatory variables.

Factor	Category	Number of habitats	Larval presence/absence		Larval abundance	
			OR (95 % CI)	P value	RR (95 % CI)	P value
Abiotic factors						
Habitat type	Non-swamp	38	1		1	
	Swamp	72	22 (6-86)	<0.001	1 (0.6-2)	0.625
Perimeter (m)	<50	84	1		1	
	≥50	26	0.3 (0.04-2.3)	0.249	0.9 (0.4-2)	0.754
Turbidity (NTU)	<200	90	1		1	
	≥200	20	1 (0.1-17)	0.780	2 (0.9-4)	0.099
Biotic factors						
<i>Anopheles</i> late instar		82	359 (33-3941)	<0.001	0.9 (0.4-2)	0.839
<i>Culex</i> larvae		88	17 (3-107)	0.002	2 (0.6-6)	0.244
Pupae		34	0.08 (0.01-0.42)	0.003	1 (0.7-2)	0.437
Odonata		41	2 (0.3-11)	0.518	0.5 (0.3-0.9)	0.019
Coleoptera		95	0.3 (0.03-3)	0.274	0.4 (0.2-0.8)	0.004
Fishes		38	0.4 (0.05-2)	0.288	0.6 (0.2-2)	0.336
Tadpoles		33	0.1 (0.01-0.5)	0.008	0.5 (0.2-0.9)	0.030

OR= odds ratio, RR= rate ratio, CI= confidence interval.

Anopheles larvae was lower (OR=0.08, CI=0.01-0.42, P=0.003) than habitats without pupae. Notably, the majority of habitats with *Anopheles* larvae were also well colonised by other invertebrates, many of which are considered predators of mosquitoes, such as Odonatan, Notonecta, and Coleoptera larvae. However, the presence of early instar *Anopheles* was only significantly and negatively associated with presence of tadpoles (OR=0.09, 0.01-0.53, P=0.003). Correspondingly, the abundance of early instar *Anopheles* larvae significantly decreased with the presence of tadpoles (RR=0.5, CI=0.2-0.9, P=0.03). Similarly, larval abundance was negatively associated with presence of Odonata (RR=0.5, CI=0.3-0.9, P=0.019) and presence of Coleoptera (RR=0.4, CI=0.2-0.8, P=0.004). There was no significant association between the presence and abundance of early instar *Anopheles* larvae and habitat size, habitat depth, distance to the nearest house, water pH, water turbidity, biofilm, debris, algae, and water plants.

Discussion

The work presented here was done with the aim of identifying graminoid plants for further behavioural and chemical ecology studies due to their association with habitats used by gravid malaria vectors for egg-laying. However, the presence of early instar *Anopheles* larvae in the majority of the surveyed habitats and the presence and high coverage of various graminoid

plants did not allow us to analyse any statistically significant association. All the habitats surveyed provided excellent oviposition sites and favourable conditions for the development of immature stages based on the high and consistent number of early instar larvae as a proxy for oviposition and the associated high abundance of late instar larvae as an indicator for survival. The study, as implemented, did not allow us to infer specific plant-based factors with oviposition. Generally, the association between graminoid plants and *Anopheles* breeding sites as well as the presence and increased densities of *Anopheles* larvae in both temporary and permanent aquatic habitats have been shown before^{16,17}. Recent studies have also shown promising odour-blends of volatile organic compounds identified from domesticated grasses such as rice and pollens of maize and sugarcane. These compounds, which include limonene, α -pinene, *p*-cymene, nonanal, benzaldehyde, sulcatone, β -caryophyllene, decanal, and 3-carene, have been reported to elicit a response in gravid *An. arabiensis*^{15,39,40}. It has been suggested that vegetation can protect mosquito immature stages from being washed off by running water⁴¹ and from predation^{42,43}.

Our study has several limitations that might be responsible for the negative results. The timing of the survey towards the end of the rainy season meant that all potential habitats were flooded and vegetation thrived. Habitats for oviposition were

not a limiting factor and likely easy to identify without major cues for orientation. This might have been different if the survey had been implemented during the dry season. Furthermore, this survey was limited to locations close to the lake shores, biasing the study towards swampy habitats. Potentially a more rigorous evaluation of the plant coverage using standard methods such as a quadrant frame which might have provided more detailed information on plant numbers, could have revealed more associations. However, given the high colonisation during the rainy season such method would be better applied during drier seasons. Lastly, due to high water levels during the peak rainy season, a number of habitats with swamp graminoids of the families Cyperaceae, Typhaceae, and Juncaceae were impossible to access, hence could not be sampled. This might also explain why only very few secondary malaria vector species and no *Anopheles funestus* were sampled, even though *An. funestus* is the major vector in houses in the study area^{44–46}.

Not many strong associations were found with early *Anopheles* larvae presence or abundance and other observed factors that would allow conclusions on oviposition preferences. However, the odds of finding early instars increased when late instar *Anopheles* larvae were present as opposed to when they were absent, potentially indicating that *Anopheles arabiensis* females oviposit in habitats containing late instar conspecific larvae as an indicator of suitable development conditions. This contrasts with experimental studies on *An. coluzzii*^{47,48}, where it has been suggested that late instar conspecific larvae repel gravid females potentially due to the risk of cannibalism⁴⁹.

The presence and abundance of early instar *Anopheles* larvae were negatively associated with the presence of tadpoles. It was previously shown that rainwater conditioned with tadpoles repelled gravid *An. gambiae* from oviposition in the laboratory⁵⁰. Mature tadpoles can prey on larvae⁵¹ and might compete for resources in aquatic habitats⁵². Our field survey indicated that early instar larvae were cohabiting with predatory invertebrates in most habitats. Whilst *Anopheles* larvae might be reduced by these organisms, as suggested by the negative association between *Anopheles* density and the presence of Odonata and Coleoptera, gravid females nevertheless did not avoid these habitats for oviposition. This finding agrees with studies elsewhere that have shown strong associations between the presence of anopheline larvae and high invertebrate diversity⁵³.

Six species of *Anopheles* mosquitoes were identified from the samples which have all been reported in previous studies in western Kenya^{18,54,55}. *Anopheles arabiensis* was the predominant malaria vector from both vegetated and non-vegetated aquatic habitats in the study area during the peak

rainy season. *Anopheles arabiensis* has historically been the predominant vector species on Rusinga Island⁵⁶. In recent years however, *An. funestus* predominates indoor vector collections^{44,46,57}, but larvae were not found during our survey. Breeding sites preferred by this mosquito species were inaccessible by the field team due to the large volumes of water in the lake after the long rains; *An. funestus* prefers breeding habitats that are covered by tall vegetations^{38,58,59}.

Conclusions

Our results did not support the hypothesis and nullified the aim of the research to identify graminoid plant species positively associated with malaria vector oviposition. Our results did not support our initial hypothesis and did not allow us to identify any association between *Anopheles* larvae and specific graminoid plants. However, *Panicum repens*, *Cynodon dactylon*, and *Cyperus rotundus* were the predominant graminoid plants found in the aquatic habitats. The habitats covered by these vegetations were abundantly colonized by early instar *Anopheles* larvae even though no specific preference for any of these could be detected, likely due to study limitations. We recommend further studies on the identification of oviposition cues from graminoid plants during the dry seasons when habitats are limited and water-levels low enough to provide access to most of them. Furthermore, it might be warranted to implement bioassays in the laboratory with the here identified grass-like plants, which will allow more standardised comparisons and sufficient replication.

Data availability

Underlying data

Harvard Dataverse: Association between graminoids and the prevalence of immature malaria. <https://doi.org/10.7910/DVN/NAT0YY60>.

This project contains the following underlying data:

- Bokore *et al.* 2020_F1000Research_All_Collected_Data.csv
- Bokore *et al.* 2020_F1000Research_Data_used_for_final_analysis.csv
- Bokore *et al.* 2020_F1000Research_Variable_Codes.csv

Data are available under the terms of the [Creative Commons Zero “No rights reserved” data waiver](#) (CC0 1.0 Public domain dedication).

Acknowledgements

We are grateful to the residents of Rusinga Island for allowing us to collect the field data in their farms. The administrative support of Ibrahim Kiche is highly appreciated.

References

1. WHO: **World Malaria Report 2019**. Geneva: World Health Organization. 2019; 1–232.
[Reference Source](#)
2. Muema JM, Bargul JL, Njeru SN, *et al.*: **Prospects for malaria control through manipulation of mosquito larval habitats and olfactory-mediated behavioural responses using plant-derived compounds**. *Parasit Vectors*. 2017; **10**(1): 184.
[PubMed Abstract](#) | [Publisher Full Text](#) | [Free Full Text](#)
3. Sinka ME, Bangs MJ, Manguin S, *et al.*: **A global map of dominant malaria vectors**. *Parasit Vectors*. 2012; **5**: 69.
[PubMed Abstract](#) | [Publisher Full Text](#) | [Free Full Text](#)
4. Coetzee M, Hunt RH, Wilkerson R, *et al.*: **Anopheles coluzzii and Anopheles amharicus, new members of the Anopheles gambiae complex**. 2013; **3619**(3): 246–74.
[Reference Source](#)
5. Ranson H, Lissenden N: **Insecticide Resistance in African Anopheles Mosquitoes: A Worsening Situation that Needs Urgent Action to Maintain Malaria Control**. *Trends Parasitol*. 2016; **32**(3): 187–96.
[PubMed Abstract](#) | [Publisher Full Text](#)
6. Coleman M, Hemingway J, Gleave KA, *et al.*: **Developing global maps of insecticide resistance risk to improve vector control**. *Malar J*. 2017; **16**(1): 86.
[PubMed Abstract](#) | [Publisher Full Text](#) | [Free Full Text](#)
7. Cook J, Tomlinson S, Kleinschmidt I, *et al.*: **Implications of insecticide resistance for malaria vector control with long-lasting insecticidal nets: Trends in pyrethroid resistance during a WHO-coordinated multi-country prospective study**. *Parasit Vectors*. 2018; **11**(1): 550.
[PubMed Abstract](#) | [Publisher Full Text](#) | [Free Full Text](#)
8. Russell TL, Beebe NW, Cooper RD, *et al.*: **Successful malaria elimination strategies require interventions that target changing vector behaviours**. *Malar J*. 2013; **12**(1): 56.
[PubMed Abstract](#) | [Publisher Full Text](#) | [Free Full Text](#)
9. Takken W, Knols BG: **Malaria vector control: current and future strategies**. *Trends Parasitol*. 2009; **25**(3): 101–4.
[PubMed Abstract](#) | [Publisher Full Text](#)
10. Lindh JM, Okal MN, Herrera-Varela M, *et al.*: **Discovery of an oviposition attractant for gravid malaria vectors of the Anopheles gambiae species complex**. *Malar J*. 2015; **14**(1): 119.
[PubMed Abstract](#) | [Publisher Full Text](#) | [Free Full Text](#)
11. Eneh LK, Fillinger U, Borg Karlson AK, *et al.*: **Anopheles arabiensis oviposition site selection in response to habitat persistence and associated physicochemical parameters, bacteria and volatile profiles**. *Med Vet Entomol*. 2019; **33**(1): 56–67.
[PubMed Abstract](#) | [Publisher Full Text](#) | [Free Full Text](#)
12. Mbare O, Lindsay SW, Fillinger U: **Testing a pyriproxyfen auto-dissemination station attractive to gravid Anopheles gambiae sensu stricto for the development of a novel attract-release-and-kill strategy for malaria vector control**. *BMC Infect Dis*. 2019; **19**(1): 800.
[PubMed Abstract](#) | [Publisher Full Text](#) | [Free Full Text](#)
13. Lyimo Edith O, Takken W: **Effects of adult body size on fecundity and the pre-gravid rate of Anopheles gambiae females in Tanzania**. *Med Vet Entomol*. 1993; **7**(4): 328–32.
[PubMed Abstract](#) | [Publisher Full Text](#)
14. Asmare Y, Hill SR, Hopkins RJ, *et al.*: **The role of grass volatiles on oviposition site selection by Anopheles arabiensis and Anopheles coluzzii**. *Malar J*. 2017; **16**(1): 65.
[PubMed Abstract](#) | [Publisher Full Text](#) | [Free Full Text](#)
15. Wondwosen B, Birgersson G, Seyoum E, *et al.*: **Rice volatiles lure gravid malaria mosquitoes, Anopheles arabiensis**. *Sci Rep*. 2016; **6**(1): 37930.
[PubMed Abstract](#) | [Publisher Full Text](#) | [Free Full Text](#)
16. Fillinger U, Sonye G, Killeen GF, *et al.*: **The practical importance of permanent and semipermanent habitats for controlling aquatic stages of Anopheles gambiae sensu lato mosquitoes: operational observations from a rural town in western Kenya**. *Trop Med Int Health*. 2004; **9**(12): 1274–89.
[PubMed Abstract](#) | [Publisher Full Text](#)
17. Imbahale SS, Paaijmans KP, Mukabana WR, *et al.*: **A longitudinal study on Anopheles mosquito larval abundance in distinct geographical and environmental settings in western Kenya**. *Malar J*. 2011; **10**(1): 81.
[PubMed Abstract](#) | [Publisher Full Text](#) | [Free Full Text](#)
18. Minakawa N, Dida GO, Sonye GO, *et al.*: **Malaria Vectors in Lake Victoria and Adjacent Habitats in Western Kenya**. *PLoS One*. 2012; **7**(3): e32725.
[PubMed Abstract](#) | [Publisher Full Text](#) | [Free Full Text](#)
19. Eneh LK, Saijo H, Borg-Karlson AK, *et al.*: **Cedrol, a malaria mosquito oviposition attractant is produced by fungi isolated from rhizomes of the grass Cyperus rotundus**. *Malar J*. 2016; **15**(1): 478.
[PubMed Abstract](#) | [Publisher Full Text](#) | [Free Full Text](#)
20. Minakawa N, Sonye G, Dida GO, *et al.*: **Recent reduction in the water level of Lake Victoria has created more habitats for Anopheles funestus**. *Malar J*. 2008; **7**(1): 119.
[PubMed Abstract](#) | [Publisher Full Text](#) | [Free Full Text](#)
21. Google Earth: **Satellite view of Lake Victoria region: Study sites view of Rusinga Islands along the shore of Lake Victoria**.
[Reference Source](#)
22. Noor AM, Gething PW, Alegana VA, *et al.*: **The risks of malaria infection in Kenya in 2009**. *BMC Infect Dis*. 2009; **9**(1): 180.
[PubMed Abstract](#) | [Publisher Full Text](#) | [Free Full Text](#)
23. Olanga EA, Okombo L, Irungu LW, *et al.*: **Parasites and vectors of malaria on Rusinga Island, Western Kenya**. *Parasit Vectors*. 2015; **8**(1): 250.
[PubMed Abstract](#) | [Publisher Full Text](#) | [Free Full Text](#)
24. Homan T, di Pasquale A, Onoka K, *et al.*: **Profile: The Rusinga Health and Demographic Surveillance System, Western Kenya**. *Int J Epidemiol*. 2016; **45**(3): 718–27.
[PubMed Abstract](#) | [Publisher Full Text](#)
25. Kagaya W, Gitaka J, Chan CW, *et al.*: **Malaria resurgence after significant reduction by mass drug administration on Ngodhe Island, Kenya**. *Sci Rep*. 2019; **9**(1): 19060.
[PubMed Abstract](#) | [Publisher Full Text](#) | [Free Full Text](#)
26. Harrera-Varela M: **Larval habitat discrimination by the African malaria vector Anopheles gambiae sensu lato: observations from standardized experiments and field studies**. Phd thesis. 2015.
[Publisher Full Text](#)
27. Ndenga BA, Simbauni JA, Mbugi JP, *et al.*: **Productivity of Malaria Vectors from Different Habitat Types in the Western Kenya Highlands**. Amdam GV editor. *PLoS One*. 2011; **6**(4): e19473.
[PubMed Abstract](#) | [Publisher Full Text](#) | [Free Full Text](#)
28. de Klerk AR, Wepener V: **The influence of biotope and sampling method on the assessment of the invertebrate community structure in endorheic reed pans in South Africa**. *African J Aquat Sci*. 2011; **36**(1): 67–74.
[Publisher Full Text](#)
29. Snell AE: **Identification keys to larval and adult female mosquitoes (Diptera: Culicidae) of New Zealand**. *New Zeal J Zool*. 2005; **32**(2): 99–110.
[Publisher Full Text](#)
30. Gillies MT, Coetzee M: **A Supplement to the Anophelinae of Africa South of the Sahara**. *Publ South African Inst Med Res*. 1987; **55**(55): 63.
[Reference Source](#)
31. Scott JA, Brogdon WG, Collins FH: **Identification of single specimens of the Anopheles gambiae complex by the polymerase chain reaction**. *Am J Trop Med Hyg*. 1993; **49**(4): 520–9.
[PubMed Abstract](#) | [Publisher Full Text](#)
32. Zianni MR, Nikbakhtzadeh MR, Jackson BT, *et al.*: **Rapid discrimination between Anopheles gambiae s.s. and Anopheles arabiensis by High-Resolution Melt (HRM) analysis**. *J Biomed Tech*. 2013; **24**(1): 1–7.
[PubMed Abstract](#) | [Publisher Full Text](#) | [Free Full Text](#)
33. Revuelta EA: **Introduction to Florida's Graminoids**. 2019; 1–44.
[Reference Source](#)
34. Fish L, Mashau AC, Moeaha MJ, *et al.*: **Identification guide to southern African grasses. An identification manual with keys, descriptions and distributions**. In: Pretoria: South African National Biodiversity Institute; 2015; 1–30.
[Reference Source](#)
35. Muyekho FN, Barrion AT, Khan ZR: **A Primer on grass identification and their uses in Kenya**. 2004; 86.
[Reference Source](#)
36. Odero JO, Fillinger U, Rippon EJ, *et al.*: **Using sibship reconstructions to understand the relationship between larval habitat productivity and oviposition behaviour in Kenyan Anopheles arabiensis**. *Malar J*. 2019; **18**(1): 286.
[PubMed Abstract](#) | [Publisher Full Text](#) | [Free Full Text](#)
37. R Core Team: **R: A Language and Environment for Statistical Computing**. Vienna, Austria; 2018.
[Reference Source](#)
38. Dia I, Guelbeogo MW, Ayala D: **Advances and perspectives in the study of the malaria mosquito Anopheles funestus**. In: Anopheles mosquitoes - New insights into malaria vectors. InTech; 2013.
[Publisher Full Text](#)
39. Wondwosen B, Birgersson G, Tekie H, *et al.*: **Sweet attraction: Sugarcane pollen-associated volatiles attract gravid Anopheles arabiensis**. *Malar J*. 2018; **17**(1): 90.
[Publisher Full Text](#)
40. Wondwosen B, Hill SR, Birgersson G, *et al.*: **A(maize)ing attraction: gravid Anopheles arabiensis are attracted and oviposit in response to maize pollen odours**. *Malar J*. 2017; **16**(1): 39.
[PubMed Abstract](#) | [Publisher Full Text](#) | [Free Full Text](#)
41. Paaijmans KP, Wandago MO, Githeko AK, *et al.*: **Unexpected high losses of Anopheles gambiae larvae due to rainfall**. Carter D, editor. *PLoS One*. 2007; **2**(11): e1146.
[PubMed Abstract](#) | [Publisher Full Text](#) | [Free Full Text](#)
42. Mutuku F, Bayoh M, Hightower A, *et al.*: **A supervised land cover classification of a western Kenya lowland endemic for human malaria: associations of**

- land cover with larval *Anopheles* habitats. *Int J Health Geogr.* 2009; **8**(1): 19.
[PubMed Abstract](#) | [Publisher Full Text](#) | [Free Full Text](#)
43. Minakawa N, Sonye G, Mogi M, *et al.*: **Habitat characteristics of *Anopheles gambiae* s.s. larvae in a Kenyan highland.** *Med Vet Entomol.* 2004; **18**(3): 301–5.
[PubMed Abstract](#) | [Publisher Full Text](#)
 44. McCann RS, Ochomo E, Bayoh MN, *et al.*: **Reemergence of *Anopheles funestus* as a Vector of *Plasmodium falciparum* in Western Kenya after Long-Term Implementation of Insecticide-Treated Bed Nets.** *Am J Trop Med Hyg.* 2014; **90**(4): 597–604.
[PubMed Abstract](#) | [Publisher Full Text](#) | [Free Full Text](#)
 45. Mathenge EM, Misiani GO, Oulo DO, *et al.*: **Comparative performance of the Mbita trap, CDC light trap and the human landing catch in the sampling of *Anopheles arabiensis*, *An. funestus* and culicine species in a rice irrigation in western Kenya.** *Malar J.* 2005; **4**: 7.
[PubMed Abstract](#) | [Publisher Full Text](#) | [Free Full Text](#)
 46. Homan T, Hiscox A, Mweresa CK, *et al.*: **The effect of mass mosquito trapping on malaria transmission and disease burden (SolarMal): a stepped-wedge cluster-randomised trial.** *Lancet.* 2016; **388**(10050): 1193–201.
[PubMed Abstract](#) | [Publisher Full Text](#)
 47. Schoelitsz B, Mwingira V, Mboera LEG, *et al.*: **Chemical mediation of oviposition by *Anopheles* mosquitoes: a push-pull system driven by volatiles associated with larval stages.** *J Chem Ecol.* 2020; **46**(4): 397–409.
[PubMed Abstract](#) | [Publisher Full Text](#) | [Free Full Text](#)
 48. Mwingira VS, Spitzen J, Mboera LEG, *et al.*: **The influence of larval stage and density on oviposition site-selection behavior of the Afrotropical malaria mosquito *Anopheles coluzzii* (Diptera: Culicidae).** *Reisen W, editor. J Med Entomol.* 2020; **57**(3): 657–66.
[PubMed Abstract](#) | [Publisher Full Text](#) | [Free Full Text](#)
 49. Koenraadt CJM, Takken W: **Cannibalism and predation among larvae of the *Anopheles gambiae* complex.** *Med Vet Entomol.* 2003; **17**(1): 61–6.
[PubMed Abstract](#) | [Publisher Full Text](#)
 50. Munga S, Minakawa N, Zhou G, *et al.*: **Effects of larval competitors and predators on oviposition site selection of *Anopheles gambiae* sensu stricto.** *J Med Entomol.* 2006; **43**(2): 221–4.
[PubMed Abstract](#) | [Publisher Full Text](#)
 51. Kweka EJ, Zhou G, Gilbreath TM 3rd, *et al.*: **Predation efficiency of *Anopheles gambiae* larvae by aquatic predators in western Kenya highlands.** *Parasit Vectors.* 2011; **4**: 128.
[PubMed Abstract](#) | [Publisher Full Text](#) | [Free Full Text](#)
 52. Mokany A, Shine R: **Competition between tadpoles and mosquito larvae.** *Oecologia.* 2003; **135**(4): 615–20.
[PubMed Abstract](#) | [Publisher Full Text](#)
 53. Fillinger U, Sombroek H, Majambere S, *et al.*: **Identifying the most productive breeding sites for malaria mosquitoes in The Gambia.** *Malar J.* 2009; **8**(1): 62.
[PubMed Abstract](#) | [Publisher Full Text](#) | [Free Full Text](#)
 54. Kweka EJ, Munga S, Himeidan Y, *et al.*: **Assessment of mosquito larval productivity among different land use types for targeted malaria vector control in the western Kenya highlands.** *Parasit Vectors.* 2015; **8**(1): 356.
[PubMed Abstract](#) | [Publisher Full Text](#) | [Free Full Text](#)
 55. St Laurent B, Cooke M, Krishnankutty SM, *et al.*: **Molecular characterization reveals diverse and unknown malaria vectors in the western Kenyan highlands.** *Am J Trop Med Hyg.* 2016; **94**(2): 327–35.
[PubMed Abstract](#) | [Publisher Full Text](#) | [Free Full Text](#)
 56. Minakawa N, Mutero CM, Githure JI, *et al.*: **Spatial distribution and habitat characterization of anopheline mosquito larvae in Western Kenya.** *Am J Trop Med Hyg.* 1999; **61**(6): 1010–6.
[PubMed Abstract](#) | [Publisher Full Text](#)
 57. Machani MG, Ochomo E, Amimo F, *et al.*: **Resting behaviour of malaria vectors in highland and lowland sites of western Kenya: Implication on malaria vector control measures.** *Frischknecht F editor. PLoS One.* 2020; **15**(2): e0224718.
[PubMed Abstract](#) | [Publisher Full Text](#) | [Free Full Text](#)
 58. Gimnig JE, Ombok M, Kamau L, *et al.*: **Characteristics of larval anopheline (Diptera: Culicidae) habitats in Western Kenya.** *J Med Entomol.* 2001; **38**(2): 282–8.
[PubMed Abstract](#) | [Publisher Full Text](#)
 59. Takken W, Knols BGJ: **Olfaction in vector-host interactions.** *Ecology and Control of Vector-borne Diseases.* The Netherlands: Wageningen Academic Publishers; 2010; **2**: 438.
[Publisher Full Text](#)
 60. Bokore G: **Association between graminoids and the prevalence of immature malaria.** *Harvard Dataverse, V1.* 2020.
<http://www.doi.org/10.7910/DVN/NAT0YY>

Open Peer Review

Current Peer Review Status:  

Version 2

Reviewer Report 12 October 2020

<https://doi.org/10.5256/f1000research.29842.r72328>

© 2020 Ochomo E. This is an open access peer review report distributed under the terms of the [Creative Commons Attribution License](#), which permits unrestricted use, distribution, and reproduction in any medium, provided the original work is properly cited.



Eric Ochomo 

Centre for Global Health Research, Kenya Medical Research Institute (KEMRI), Kisumu, Kenya

I think the authors have done a good job of revising the manuscript and it is in a indexable format.

Competing Interests: No competing interests were disclosed.

I confirm that I have read this submission and believe that I have an appropriate level of expertise to confirm that it is of an acceptable scientific standard.

Version 1

Reviewer Report 14 September 2020

<https://doi.org/10.5256/f1000research.28336.r70204>

© 2020 Ochomo E. This is an open access peer review report distributed under the terms of the [Creative Commons Attribution License](#), which permits unrestricted use, distribution, and reproduction in any medium, provided the original work is properly cited.



Eric Ochomo 

Centre for Global Health Research, Kenya Medical Research Institute (KEMRI), Kisumu, Kenya

This is an important article that attempts to associate the presence of sedges and the presence of immature malaria vectors along the shores on Lake Victoria on the Rusinga Island. The article is quite informative and can generate a tool that can be instrumental in the fight against malaria. I agree with most aspects of it but would like to suggest some improvements that can make it even look better. Below are some of the areas I noted that needs adjustment.

1. Exploitation of the oviposition cues can be very important in implementing the attract and

kill mosquito control technique. The authors should identify and discuss more chemical cues that would potentially attract gravid females to lay eggs in the graminoid other than cedrol present in *Cyperus rotundus* in the other members of Cyperaceae family identified in this article.

2. The method used to estimate the perimeter of individual habitats is subject to errors incase two different people are involved since one person's step cannot be exactly be the same to another ones. I suggest a verifiable method ought to have been used in evaluating habitat sizes.
3. The author indicates that he performed test for abiotic factors like turbidity, pH and temperature only. I think that the parameters were not the only abiotic factors that would influence the distribution of immature stages of malaria vectors. Abiotic factors like Dissolved oxygen (DO), salinity atmospheric pressure could also influence the abundance and distribution of mosquito larvae in the water and ought to have been evaluated.
4. In establishing the coverage of the various graminoid plants in the larval habitats by visually assigning percentages in a look and see manner, I think this is subject to error too in reporting the coverage of each Cyperaceae member. They are supposed to use a more objective method of estimating the abundance of the sedges.
5. There is a contradiction in reporting the result for species found in the habitats densely covered with graminoid vegetation and those that are found in habitats which are sparsely covered by graminoid vegetation and I am not sure if this was an error.
6. The article could use a thorough review for grammatical errors.

Is the work clearly and accurately presented and does it cite the current literature?

Yes

Is the study design appropriate and is the work technically sound?

Partly

Are sufficient details of methods and analysis provided to allow replication by others?

Yes

If applicable, is the statistical analysis and its interpretation appropriate?

Yes

Are all the source data underlying the results available to ensure full reproducibility?

Yes

Are the conclusions drawn adequately supported by the results?

Yes

Competing Interests: No competing interests were disclosed.

Reviewer Expertise: Medical Entomology, epidemiology

I confirm that I have read this submission and believe that I have an appropriate level of expertise to confirm that it is of an acceptable scientific standard, however I have significant reservations, as outlined above.

Author Response 29 Sep 2020

Getachew Bokore, International Centre of Insect Physiology and Ecology (icipe), P.O. Box 30772-00100, Nairobi, Kenya

We appreciate the constructive comments of the reviewer. Below we provide a point by point response.

1. Exploitation of the oviposition cues can be very important in implementing the attract and kill mosquito control technique. The authors should identify and discuss more chemical cues that would potentially attract gravid females to lay eggs in the graminoid other than cedrol present in *Cyperus rotundus* in the other members of Cyperaceae family identified in this article.

We included some discussion on this as suggested.

2. The method used to estimate the perimeter of individual habitats is subject to errors incase two different people are involved since one person's step cannot be exactly be the same to another ones. I suggest a verifiable method ought to have been used in evaluating habitat sizes.

We clarified in the methods that the perimeter was estimated always by the same person. The perimeter was a relative estimate rather than a precise measure which we did not consider necessary in context of our study.

3. The author indicates that he performed test for abiotic factors like turbidity, pH and temperature only. I think that the parameters were not the only abiotic factors that would influence the distribution of immature stages of malaria vectors. Abiotic factors like Dissolved oxygen (DO), salinity atmospheric pressure could also influence the abundance and distribution of mosquito larvae in the water and ought to have been evaluated.

We included a justification for the selection of the measures in the method section. All habitats surveyed were very similar in their characteristics, hence no major variation was expected; however, it cannot be excluded and we aimed to interpret the work carefully within its discussed limitations.

4. In establishing the coverage of the various graminoid plants in the larval habitats by visually assigning percentages in a look and see manner, I think this is subject to error too in reporting the coverage of each Cyperaceae member. They are supposed to use a more objective method of estimating the abundance of the sedges.

Indeed for an ecological mapping of plant cover, there are various methods available for sampling, for example, the quadrant method and similar approaches. We explored and piloted some of these methods prior to the survey, however did not find them very informative or feasible given the nature of habitats. The most common way to measure cover is the visual estimation method. Visual estimation is popular because it is fast, requires no specialized equipment, and can be adapted to plants of various growth forms. Again, we have clarified that the estimation was done by a single person for relative comparability across sites. In the light of our findings, we would not expect that a different method would have led to a different conclusion.

5. There is a contradiction in reporting the result for species found in the habitats densely covered with graminoid vegetation and those that are found in habitats which are sparsely covered by graminoid vegetation and I am not sure if this was an error.

We were not able to locate the contradiction, possibly this was a misunderstanding?

6. The article could use a thorough review for grammatical errors.

We have gone through the article and corrected the English for errors.

Competing Interests: No competing interests were disclosed.

Reviewer Report 08 September 2020

<https://doi.org/10.5256/f1000research.28336.r70203>

© 2020 Dugassa S. This is an open access peer review report distributed under the terms of the [Creative Commons Attribution License](#), which permits unrestricted use, distribution, and reproduction in any medium, provided the original work is properly cited.

✓ **Sisay Dugassa** 

Vector Biology and Control Research Unit, Akililu Lemma Institute of Pathobiology, Addis Ababa University, Addis Ababa, Ethiopia

Presentation of the work is very clear with a well designed methodology. Moreover, the analyses and interpretation of the results were properly presented. Importantly, the authors analyzed the association of early instar larvae of *Anopheles* with graminoid plants and reported that "*Anopheles coustani*, *An. rufipes* and *An. maculipalpis* were found only in aquatic habitats covered with graminoid plants, whereas *An. arabiensis*, *An. ziemanni* and *An. pharoensis* were found in both habitats with and without graminoid plants". Moreover, they analyzed the correlation between the dominant graminoid plant species and early instar larvae and indicted the correlation is not species dependent. Such results are very important for future work in this area of research. However, there might be less importance of graminoid plants for some *Anopheles* species such as *An. arabiensis*, *An. ziemanni* and *An. pharoensis*. Therefore, authors should clearly indicate the

potential importance of other factors than the plant species for the availability and density of the larvae (at least for *An. arabiensis*, *An. ziemanni* and *An. pharoensis*) in their conclusion section.

Is the work clearly and accurately presented and does it cite the current literature?

Yes

Is the study design appropriate and is the work technically sound?

Yes

Are sufficient details of methods and analysis provided to allow replication by others?

Yes

If applicable, is the statistical analysis and its interpretation appropriate?

Yes

Are all the source data underlying the results available to ensure full reproducibility?

Yes

Are the conclusions drawn adequately supported by the results?

Yes

Competing Interests: No competing interests were disclosed.

Reviewer Expertise: Medical Entomologist

I confirm that I have read this submission and believe that I have an appropriate level of expertise to confirm that it is of an acceptable scientific standard.

The benefits of publishing with F1000Research:

- Your article is published within days, with no editorial bias
- You can publish traditional articles, null/negative results, case reports, data notes and more
- The peer review process is transparent and collaborative
- Your article is indexed in PubMed after passing peer review
- Dedicated customer support at every stage

For pre-submission enquiries, contact research@f1000.com

F1000Research